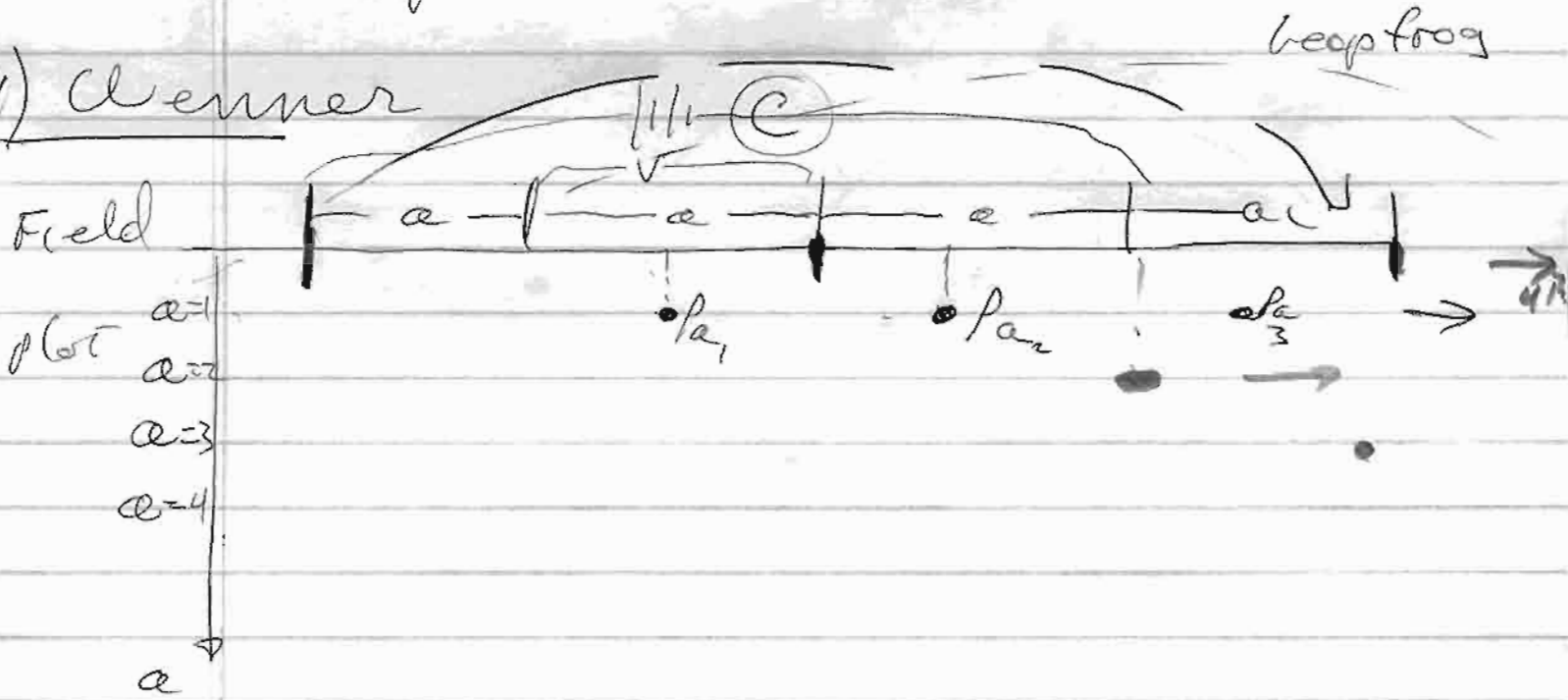


Pseudo sections

When we acquire resistivity data in the field we need to plot & interpret those results

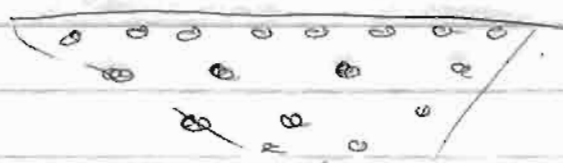
1) Wenner



plot ρ_a = Apparent Resistivity at the Center of the array for each polling of the electrodes for each a spacing.

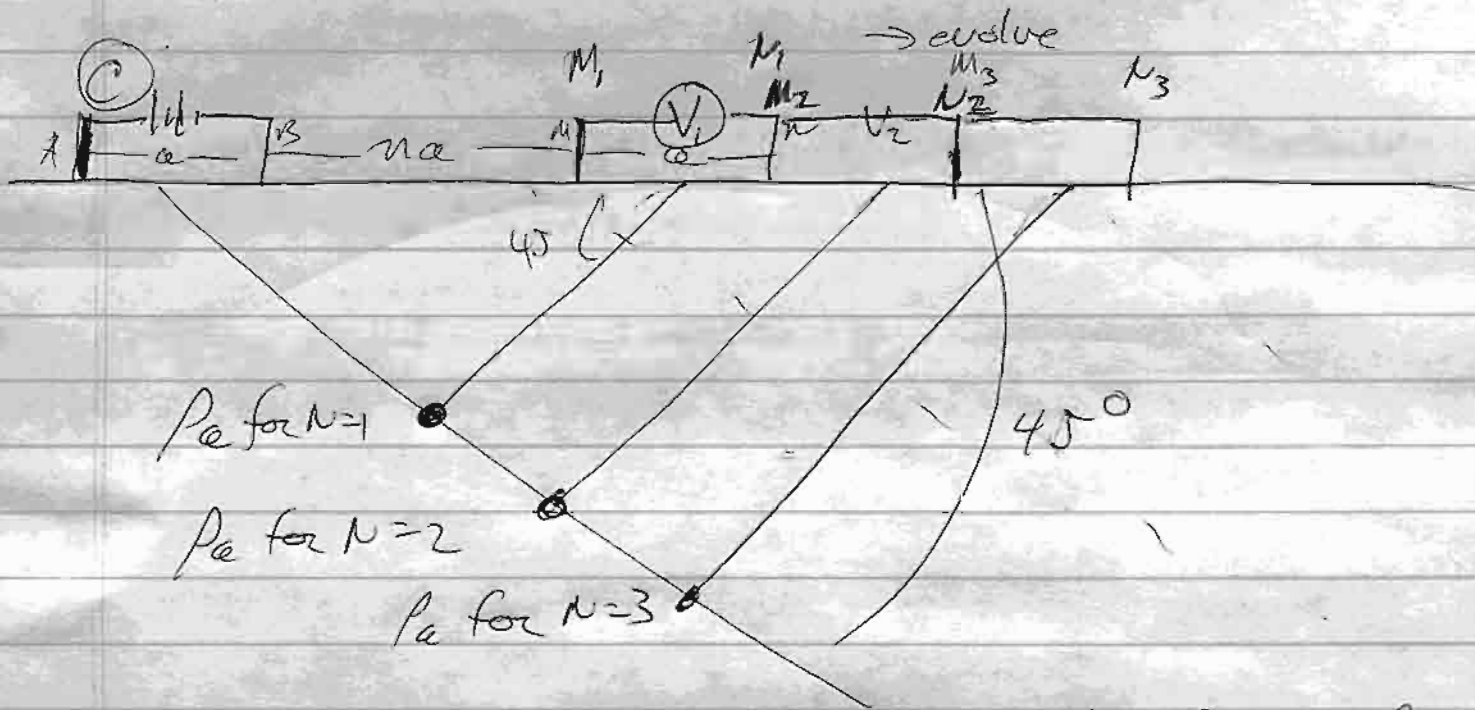
As a increases, ρ_a plotted a greater "DEPTH".

Results of field acquisition:



Show like

A pole-dipole Pseudo section



AGAIN, Greater separation of electrodes results in P_a being plotted at a greater depth

Next \rightarrow move A \leftrightarrow B pair to right

Show example

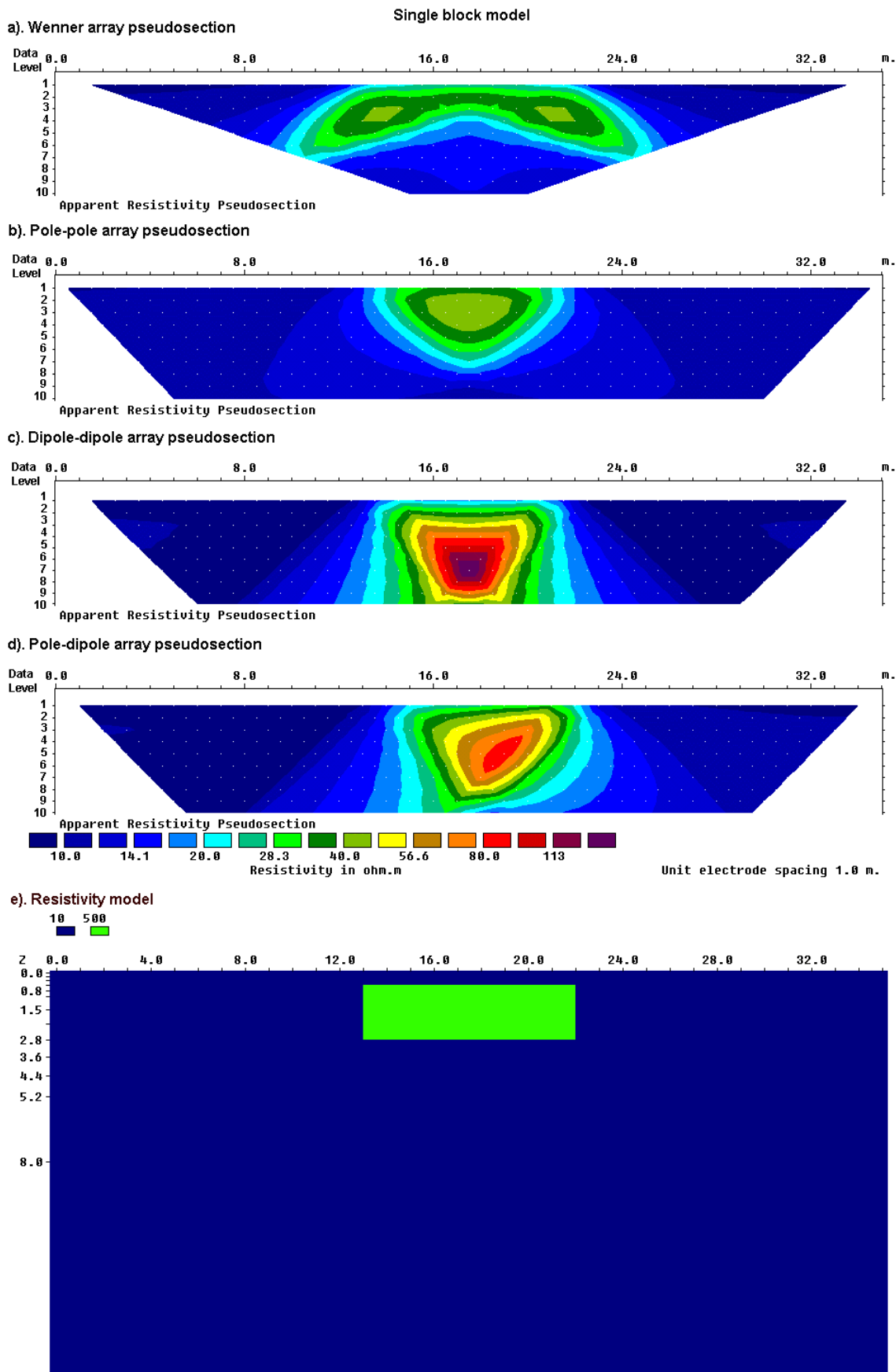


Figure 2.7. The apparent resistivity pseudosections from 2-D imaging surveys with different arrays over a rectangular prism.