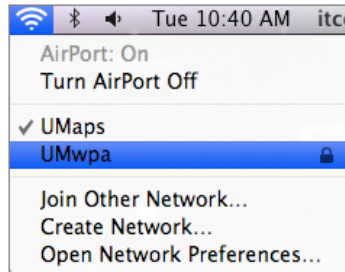
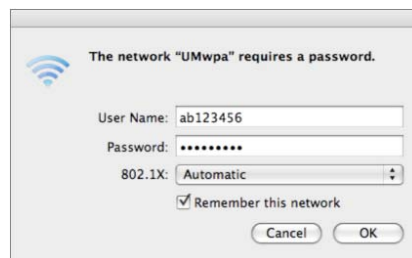


Configuring Mac OS 10.5 for WPA2 Enterprise

1. From your toolbar, click on the AirPort icon and select **UMwpa**.



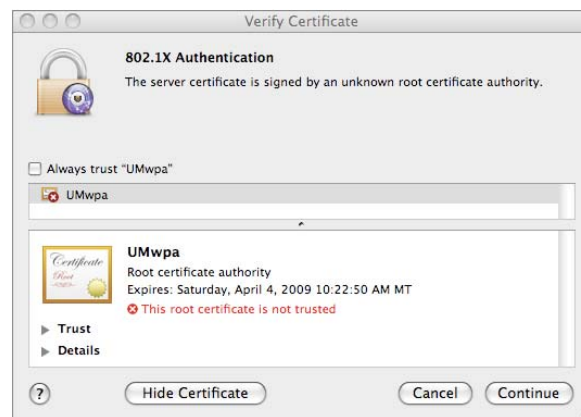
2. Under **The network "UMwpa" requires a password**, enter your **User Name (NetID)** and **password**.



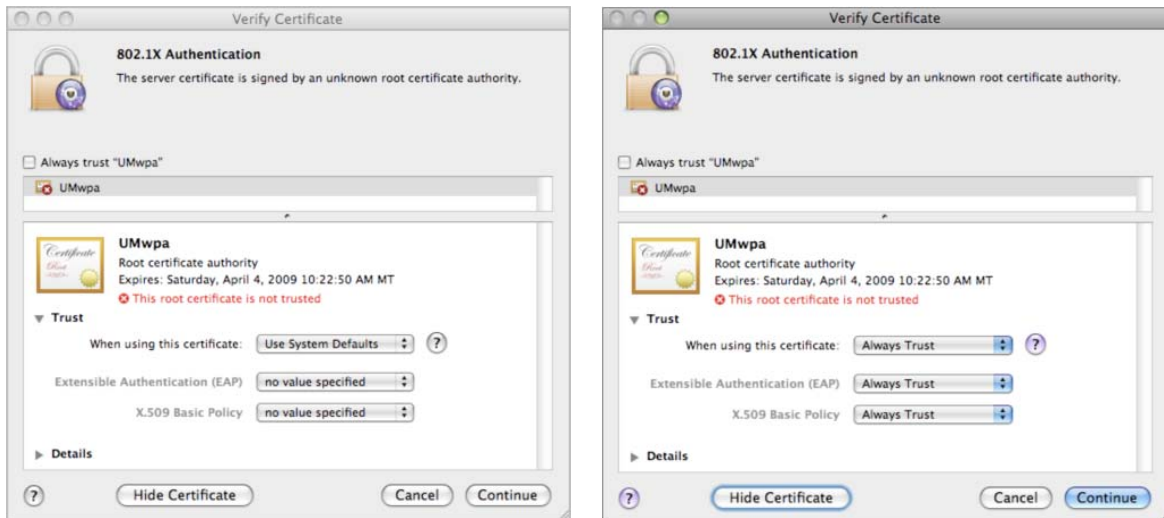
3. A **Verify Certificate** window displays. Click **Show Certificate**.



4. The **Verify Certificate** window expands. Click on the arrow next to **Trust**.



- Under **Trust, When using this certificate**, click on the arrow next to **Use System Defaults** and select **Always Trust**. This will also automatically reset the Extensible Authentication (EAP) and X.509 Basic Policy options to **Always Trust**. Click **Continue**.



- An **802.1X Authentication** window displays. Enter your **User Name** (NetID) and **password**.



- You are now accessing wireless using WPA2 Enterprise. To verify, attempt to access the web by opening a web browser. Note that each time you restart your computer you maybe prompted for your user name and password.

Questions about configuring WPA2 Enterprise may be directed to IT Central in Social Science 120, or via phone at 243-HELP (x4357).