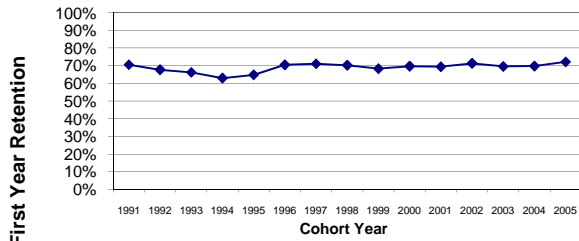


### Retention and Graduation Rates of First-Time FT Freshmen

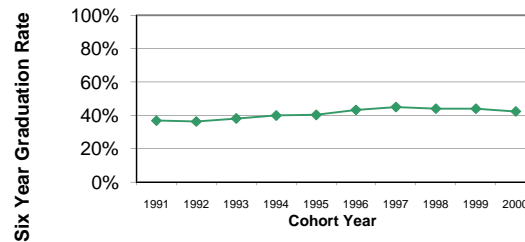
Fall Semester of Entrance	Cohort Head Count	Cumulative Graduation/Continuation Rates									
		Retention Rate after -		Within 4 Years		Within 5 Years		Within 6 Years		Within 10 Years	
		1 Year	2 Years	Graduated	Continuing	Graduated	Continuing	Graduated	Continuing	Graduated	Continuing
1991	1,303	70.5%	55.3%	10.1%	35.5%	30.2%	14.7%	36.8%	8.2%	42.3%	1.8%
1992	1,393	67.7%	52.7%	10.0%	34.1%	29.1%	12.7%	36.3%	6.2%	42.6%	1.5%
1993	1,423	66.2%	52.1%	13.3%	32.1%	32.0%	11.7%	38.1%	6.3%	44.6%	1.2%
1994	1,512	63.0%	53.6%	16.6%	29.9%	34.1%	9.7%	39.9%	4.6%	45.0%	0.9%
1995	1,452	64.8%	51.9%	17.9%	27.7%	33.8%	11.0%	40.3%	5.6%	45.2%	0.7%
1996	1,618	70.5%	55.8%	20.0%	28.7%	37.3%	11.8%	43.3%	5.7%	48.2%	1.4%
1997	1,711	71.1%	57.0%	19.6%	33.0%	38.3%	11.7%	45.0%	5.4%		
1998	1,604	70.2%	57.2%	19.3%	32.4%	37.5%	13.0%	44.0%	6.5%		
1999	1,671	68.3%	54.8%	20.3%	30.8%	36.7%	10.8%	44.0%	4.8%		
2000	1,750	69.7%	57.8%	19.7%	28.9%	36.2%	11.8%	42.3%	5.9%		
2001	1,764	69.4%	57.4%	19.5%	31.3%	36.5%	12.2%				
2002	1,788	71.3%	58.0%	18.5%	31.3%						
2003	1,770	69.5%	57.7%								
2004	1,808	69.8%	56.8%								
2005	1,770	72.1%									
2006	1,658										

Source: CSRDE Survey

Trend in First Year Retention Rate



Trend in Six Year Graduation Rate



Office of University Planning, Budgeting, and Analysis

First Year Retention Rate	1991 70.5%	1992 67.7%	1993 66.2%	1994 63.0%	1995 64.8%	1996 70.5%	1997 71.1%	1998 70.2%	1999 68.3%	2000 69.7%	2001 69.4%	2002 71.3%	2003 69.5%	2004 69.8%	2005 72.1%
Six Year Graduation Rate	1991 36.8%	1992 36.3%	1993 38.1%	1994 39.9%	1995 40.3%	1996 43.3%	1997 45.0%	1998 44.0%	1999 44.0%	2000 42.3%					