



**Integrated Postsecondary Education Data System 2006 - 07**

Institution: The University of Montana (180489) (1)

User ID: 88g2911

Institutions	Surveys	Reports	Tools	Help	LogOut
--------------	---------	---------	-------	------	--------

**Finance**

<a href="#">Hide Menu</a>	Finance - Public institutions	<a href="#">Instructions</a> ?
---------------------------	-------------------------------	--------------------------------

**Reporting Standard**

- ▼ Screening Questions
  - ▶ **Reporting method**
  - ▶ Screening Questions
  - ▶ Assets and Property
  - ▶ Revenues
  - ▶ Expenses
  - ▶ Net Assets
  - ▶ Scholarships
  - ▶ GASB using FASB
  - ▶ Endowment
  - ▶ Census Data
  - ▶ Debt and Assets

**Please indicate which reporting standards are used to prepare your financial statements:**

- GASB (Governmental Accounting Standard Board), using standards of GASB 34 & 35
- FASB (Financial Accounting Standard Board)

**Please consult your business officer for the correct response before saving this screen.**  
Your response to this question will determine the forms you will receive for reporting finance data.

- Invalid data type
- Fatal error
- Confirm or explain
- Edit explanation



## Integrated Postsecondary Education Data System 2006 - 07

Institution: The University of Montana (180489) (1)

User ID: 88g2911

Institutions

Surveys

Reports

Tools

Help

LogOut

### Finance

Hide Menu

Finance - Public institutions

Instructions ?

#### General Information

#### Finance - Public Institutions

▶ Screening Questions

▼ Screening Questions

##### ▶ General information

▶ Assets and Property

▶ Revenues

▶ Expenses

▶ Net Assets

▶ Scholarships

▶ GASB using FASB

▶ Endowment

▶ Census Data

▶ Debt and Assets

To the extent possible, the finance data requested in this report should be provided from your institution's audited General Purpose Financial Statement (GPFS). Please refer to the instructions specific to each page of the survey for detailed instruction and references.

#### 1. Fiscal Year calendar

**This report covers financial activities for the 12-month fiscal year:** (The fiscal year reported should be the most recent fiscal year ending before October 1, 2006.)

Beginning: month/year (MMYYYY)

Month: Year: 

And ending: month/year (MMYYYY)

Month: Year: 

#### 2. Audit Opinion

**Did your institution receive an unqualified opinion on its General Purpose Financial Statements from your auditor for the fiscal year noted above?** (If your institution is audited only in combination with another entity, answer this question based on the audit of that entity.)

Unqualified       Qualified       Don't know

**3. GASB Statement No. 34 offers three alternative reporting models for special-purpose governments like colleges and universities. Which model is used by your institution ?**

- Business Type Activities  
 Governmental Activities  
 Governmental Activities with Business-Type Activities

**4. If your institution participates in intercollegiate athletics, are the expenses accounted for as auxiliary enterprises or treated as student services?**

- Auxiliary enterprises  
 Student services  
 Does not participate in intercollegiate athletics  
 Other (specify in caveats box below)

**5. Does this institution or any of its foundations or other affiliated organizations own endowment assets ?**

- Yes - (report endowment assets)  
 No

#### 6. Component Units

Each discretely presented component unit should be reported in the same manner and amounts as included on the face of the institution's GPFS. There should be one Finance Survey component unit form (Part F or G) completed for each column on the face of the GPFS **other than the institution itself**, whether that column represents a single component unit or a combination of component units.

Number of component unit columns on GPFS using FASB standards

Number of component unit columns on GPFS using GASB standards

Caveats:



Invalid data type



Fatal error



Confirm or explain



Edit explanation



**Integrated Postsecondary Education Data System 2006 - 07**

Institution: The University of Montana (180489) (1)

User ID: 88g2911

Institutions	Surveys	Reports	Tools	Help	LogOut
--------------	---------	---------	-------	------	--------

**Finance**

<a href="#">Hide Menu</a>	<b>Part A - Statement of Net Assets</b>	<a href="#">Instructions</a> ?
---------------------------	---	--------------------------------

**Fiscal Year 2006**

▶ Screening Questions		<b>Report in whole dollars only</b>		
▶ Screening Questions				
▼ Assets and Property	Line no.		Current year amount	Prior year amount
▶ <b>Assets</b>		<u>Current Assets</u>		
▶ Plant, Property & Equip.	01	Total <u>Current Assets</u>	83,267,361	70,885,106
▶ Revenues				
▶ Expenses		<u>Noncurrent Assets</u>		
▶ Net Assets	02	<u>Capital assets</u> - depreciable (gross)	385,415,271	369,840,335
▶ Scholarships	03	<u>Accumulated depreciation</u> (enter as a positive amount)	185,079,986	179,089,687
▶ GASB using FASB				
▶ Endowment	04	Other noncurrent assets (CV) CV=[A05-(A02-A03)]	33,317,103	31,540,349
▶ Census Data	05	Total noncurrent assets	233,652,388	222,290,997
▶ Debt and Assets				
	06	Total assets (CV) CV=(A01+A05)	316,919,749	293,176,103
		<u>Current Liabilities</u>		
	07	<u>Long-term debt, current portion</u>	5,046,488	4,352,418
	08	Other <u>current liabilities</u> (CV) CV=(A09-A07)	34,205,554	36,036,315
	09	Total current liabilities	39,252,042	40,388,733
		<u>Noncurrent Liabilities</u>		
	10	<u>Long-term debt</u>	121,254,568	112,713,303
	11	Other noncurrent liabilities (CV) CV=(A12-A10)	25,978,746	24,507,189
	12	Total noncurrent liabilities	147,233,314	137,220,492
	13	Total liabilities (CV) CV=(A09+A12)	186,485,356	177,609,225
		<u>Net Assets</u>		

14	<u>Invested in capital assets, net of related debt</u>	87,007,017	75,399,461
15	<u>Restricted-expendable</u>	3,975,627	3,930,080
16	<u>Restricted-nonexpendable</u>	17,058,824	14,912,069
17	<u>Unrestricted (CV)</u> <b>CV</b> =[A18-(A14+A15+A16)]	22,392,925	21,325,268
18	<u>Total Net assets (CV)</u> <b>CV</b> =(A06-A13)	130,434,393	115,566,878

**CV= Calculated Value**

CAVEATS

Invalid data type  
  Fatal error  
  Confirm or explain  
  Edit explanation



**Integrated Postsecondary Education Data System 2006 - 07**

Institution: The University of Montana (180489) (1)

User ID: 88g2911

Institutions	Surveys	Reports	Tools	Help	LogOut
--------------	---------	---------	-------	------	--------

**Finance**

<a href="#">Hide Menu</a>	Part A - Plant, Property, and Equipment	<a href="#">Instructions</a>
---------------------------	---	------------------------------

**Fiscal Year 2006**

- ▶ Screening Questions
- ▶ Screening Questions
- ▼ Assets and Property
  - ▶ Assets
  - ▶ **Plant, Property & Equip.**
  - ▶ Revenues
  - ▶ Expenses
  - ▶ Net Assets
  - ▶ Scholarships
  - ▶ GASB using FASB
  - ▶ Endowment
  - ▶ Census Data
  - ▶ Debt and Assets

**Report in whole dollars only**

Line No.	Description	Beginning balance.	Additions	Retirements (CV)	Ending balance
	<b>Plant, Property, and Equipment</b>				
21	Land & land improvements	14,033,983	399,013	0	14,432,996
22	Infrastructure	0	0	0	0
23	Buildings	150,871,044	0	0	150,871,044
24	Equipment	35,808,267	4,744,665	7,278,047	33,274,885
25	Art and library collections	58,411,223	1,454,703	111,946	59,753,980
26	Property obtained under capital leases (if not included in equipment)	0	0	0	0
27	Construction in progress	12,902,596	16,956,500	1,519,958	28,339,138
28	Accumulated depreciation	179,089,687	12,834,105	6,843,806	185,079,986

**CV = (Beginning Balance + Additions - Ending Balance)**

**CAVEATS**

- Invalid data type
- Fatal error
- Confirm or explain
- Edit explanation

Previous

Next



**Integrated Postsecondary Education Data System 2006 - 07**

Institution: The University of Montana (180489) (1)

User ID: 88g2911

Institutions	Surveys	Reports	Tools	Help	LogOut
--------------	---------	---------	-------	------	--------

**Finance**

<a href="#">Hide Menu</a>	<b>Part B - Revenues and Other Additions</b>	<a href="#">Instructions</a> ?
---------------------------	--	--------------------------------

**Fiscal Year 2006**

- ▶ Screening Questions
- ▶ Screening Questions
- ▶ Assets and Property
- ▼ Revenues
  - ▶ **Part 1**
  - ▶ Part 2
  - ▶ Part 3
- ▶ Expenses
- ▶ Net Assets
- ▶ Scholarships
- ▶ GASB using FASB
- ▶ Endowment
- ▶ Census Data
- ▶ Debt and Assets

**Report in whole dollars only**

Line No.	Source of Funds	Current year amount	Prior year amount
<b>Operating Revenues</b>			
01	Tuition & fees, after deducting discounts & allowances	72,780,678	69,310,726
	<u>Grants and contracts - operating</u>		
02	Federal operating grants and contracts	51,973,829	53,924,417
03	State operating grants and contracts	7,085,249	5,034,852
04	Local/private operating grants and contracts	4,405,924	3,665,975
05	Sales & services of <u>auxiliary enterprises</u> , after deducting discounts & allowances	26,798,559	24,310,951
06	<u>Sales &amp; services of hospitals</u> , after deducting patient contractual allowances	0	0
07	<u>Independent operations</u>	0	0
08	Other sources - operating (CV) CV=[B09-(B01+ ....+B07)]	24,591,984	24,633,312
09	Total operating revenues	187,636,223	180,880,233

Invalid data type  
 Fatal error  
 Confirm or explain  
 Edit explanation





**Integrated Postsecondary Education Data System 2006 - 07**

Institution: The University of Montana (180489) (1)

User ID: 88g2911

Institutions	Surveys	Reports	Tools	Help	LogOut
--------------	---------	---------	-------	------	--------

**Finance**

<a href="#">Hide Menu</a>	<b>Part B - Revenues and Other Additions</b>	<a href="#">Instructions</a> ?
---------------------------	--	--------------------------------

**Fiscal Year 2006**

- ▶ Screening Questions
- ▶ Screening Questions
- ▶ Assets and Property
- ▼ Revenues
  - ▶ Part 1
  - ▶ **Part 2**
  - ▶ Part 3
- ▶ Expenses
- ▶ Net Assets
- ▶ Scholarships
- ▶ GASB using FASB
- ▶ Endowment
- ▶ Census Data
- ▶ Debt and Assets

**Report in whole dollars only**

Line No.	Source of funds	Current year amount	Prior year amount
<b><u>Nonoperating Revenues</u></b>			
10	<u>Federal appropriations</u>	0	0
11	<u>State appropriations</u>	40,274,782	36,773,399
12	<u>Local appropriations, education district taxes, &amp; similar support</u>	0	0
<b><u>Grants-nonoperating</u></b>			
13	Federal nonoperating grants	0	0
14	State nonoperating grants	0	0
15	Local nonoperating grants	0	0
16	<u>Gifts, including contributions from affiliated organizations</u>	14,295,095	8,471,871
17	<u>Investment income</u>	4,447,867	2,437,420
18	Other nonoperating revenues (CV) CV=[B19-(B10+...+B17)]	185,312	224,590
19	Total nonoperating revenues	59,203,056	47,907,280

Invalid data type  
 Fatal error  
 Confirm or explain  
 Edit explanation



**Integrated Postsecondary Education Data System 2006 - 07**

Institution: The University of Montana (180489) (1)

User ID: 88g2911

Institutions	Surveys	Reports	Tools	Help	LogOut
--------------	---------	---------	-------	------	--------

**Finance**

<a href="#">Hide Menu</a>	<b>Part B - Revenues and Other Additions</b>	<a href="#">Instructions</a> ?
---------------------------	--	--------------------------------

**Fiscal Year 2006**

- ▶ Screening Questions
- ▶ Screening Questions
- ▶ Assets and Property
- ▼ Revenues
  - ▶ Part 1
  - ▶ Part 2
  - ▶ **Part 3**
- ▶ Expenses
- ▶ Net Assets
- ▶ Scholarships
- ▶ GASB using FASB
- ▶ Endowment
- ▶ Census Data
- ▶ Debt and Assets

**Report in whole dollars only**

Line No.	Resource of funds	Current year amount	Prior year amount
	Other Revenues and Additions		
20	Capital appropriations	0	0
21	Capital grants & gifts	2,146,935	2,085,660
22	Additions to permanent endowments	1,562,500	3,437,500
23	Other revenues & additions (CV) CV=[B24-(B20+...+B22)]	0	0
24	Total other revenues and additions	3,709,435	5,523,160
25	Total all revenues and other additions (CV) CV=(B09+B19+B24)	250,548,714	234,310,673

**CV = Calculated Value**

**CAVEATS**

- ⚠ Invalid data type
- ⊗ Fatal error
- ⬆ Confirm or explain
- ⬇ Edit explanation



**Integrated Postsecondary Education Data System 2006 - 07**

Institution: The University of Montana (180489) (1)

User ID: 88g2911

Institutions Surveys Reports Tools Help LogOut

**Finance**

Hide Menu **Part C - Expenses and Other Deductions** Instructions

**Fiscal Year 2006**

Line No.	Description	1	2	3	4	5	All other
	Report in whole dollars only	Current year total	Salaries & wages	Employee fringe benefits	Depreciation		
<b>Operating Expenses</b>							
01	Instruction	65,445,651	47,271,278	11,740,130		0	6,434,243
02	Research	37,691,473	19,434,321	4,402,183		0	13,854,969
03	Public service	10,175,490	5,887,611	1,539,864		0	2,748,015
05	Academic support	17,378,679	9,482,177	2,563,717		0	5,332,785
06	Student services	15,277,367	7,021,957	1,983,636		0	6,271,774
07	Institutional support	18,156,996	9,412,946	3,098,414		0	5,645,636
08	Operation & maintenance of plant	13,567,848	5,606,725	1,776,714		0	6,184,409
09	Depreciation	13,096,659				13,096,659	
10	Scholarships and fellowships expenses, excluding discounts & allowances (do not include work study)	11,605,554					11,605,554

11	here) <u>Auxiliary enterprises</u>	26,555,641	13,289,366	3,873,911	0	9,392,364
12	<u>Hospital services</u>	0	0	0	0	0
13	<u>Independent operations</u>	0	0	0	0	0
14	Other expenses & deductions (CV) CV=[C15- (C01+...+C13)]	0	0	0	0	0
15	Total operating expenses	228,951,358	117,406,381	30,978,569	13,096,659	67,469,749
	Prior year amount	220,848,177	112,009,491	28,596,723	12,520,896	67,721,067

 Invalid data type 
  Fatal error 
  Confirm or explain 
  Edit explanation



**Integrated Postsecondary Education Data System 2006 - 07**

Institution: The University of Montana (180489) (1)

User ID: 88g2911

Institutions Surveys Reports Tools Help LogOut

**Finance**

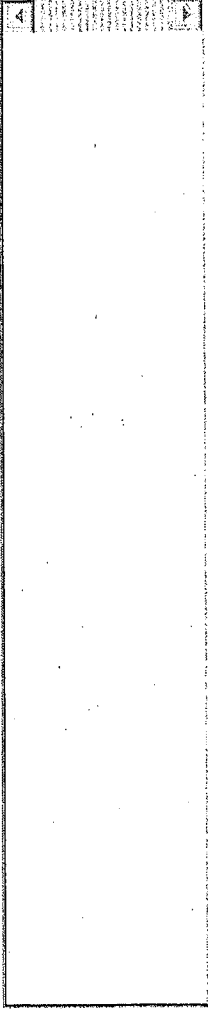
Hide Menu **Part C - Expenses and Other Deductions** **Instructions**

**Fiscal Year 2006**

Report in whole dollars only	1	2	3	4	5
Description	Current year total	Salaries & wages	Employee fringe benefits	Depreciation	All other
▶ Screening Questions					
▶ Screening Questions					
▶ Assets and Property					
▶ Revenues					
▶ Expenses					
▶ Part 1					
▶ Part 2					
▶ Net Assets					
▶ Scholarships					
▶ GASB using FASB					
▶ Endowment					
▶ Census Data					
▶ Debt and Assets					
▶ Total expenses & deductions	235,503,969	117,406,381	30,978,569	13,096,659	74,022,360
▶ Prior year amount	226,394,012	112,009,491	28,596,723	12,520,896	73,266,902
▶ Interest	6,030,122				6,030,122
▶ Other nonoperating expenses & deductions (CV)	522,489	0	0	0	522,489
▶ Total nonoperating expenses & deductions (CV)	6,552,611	0	0	0	6,552,611

CV = Calculated Value

CAVEATS



 Invalid data type  Fatal error  Confirm or explain  Edit explanation



**Integrated Postsecondary Education Data System 2006 - 07**

Institution: The University of Montana (180489) (1)

User ID: 88g2911

Institutions	Surveys	Reports	Tools	Help	LogOut
--------------	---------	---------	-------	------	--------

**Finance**

<a href="#">Hide Menu</a>	<b>Part D - Summary of Changes In Net Assets</b>	<a href="#">Instructions</a> ?
---------------------------	--	--------------------------------

**Fiscal Year 2006**

	Line No.	Description	Current year amount	Prior year amount
▶ Screening Questions				
▶ Screening Questions				
▶ Assets and Property	01	Total revenues & other additions (from B25)	250,548,714	234,310,673
▶ Revenues				
▶ Expenses	02	Total expenses & deductions (from C19)	235,503,969	226,394,012
▼ Net Assets				
▶ <b>Net Assets</b>	03	Increase in net assets during year (CV) CV=(D01-D02)	15,044,745	7,916,661
▶ Scholarships	04	<u>Net assets</u> beginning of year	115,566,878	106,180,726
▶ GASB using FASB				
▶ Endowment	05	<u>Adjustments to beginning net assets</u> (CV) CV=[D06-(D03+D04)]	-177,230	1,469,491
▶ Census Data	06	Net assets end of year (from A18)	130,434,393	115,566,878
▶ Debt and Assets				

**CV = Calculated Value**

**CAVEATS**

Invalid data type  
 Fatal error  
 Confirm or explain  
 Edit explanation



**Integrated Postsecondary Education Data System 2006 - 07**

Institution: The University of Montana (180489) (1)

User ID: 88g2911

Institutions	Surveys	Reports	Tools	Help	LogOut
--------------	---------	---------	-------	------	--------

**Finance**

<a href="#">Hide Menu</a>	Part E - Scholarships and Fellowships	<a href="#">Instructions</a> ?
---------------------------	---------------------------------------	--------------------------------

**Part E - Scholarships and Fellowships  
Fiscal Year 2006**

- ▶ Screening Questions
- ▶ Screening Questions
- ▶ Assets and Property
- ▶ Revenues
- ▶ Expenses
- ▶ Net Assets
- ▼ Scholarships
  - ▶ **Scholarships & Fellowships**
  - ▶ GASB using FASB
  - ▶ Endowment
  - ▶ Census Data
  - ▶ Debt and Assets

**Report in whole dollars only**

Line No.	Source	Current year amount	Prior year amount
	Institutional Expenses and Discounts & Allowances		
	Gross Scholarships and Fellowships (no loans included)		
01	<u>Pell grants (federal)</u>	10,931,320	11,440,106
02	<u>Other federal grants</u>	3,034,843	3,081,410
03	<u>Grants by state government</u>	673,350	659,466
04	<u>Grants by local government</u>	0	0
05	<u>Institutional grants from restricted resources</u>	5,864,070	5,102,626
06	<u>Institutional grants from unrestricted resources (CV)</u> <b>CV=[E07-(E01+...+E05)]</b>	8,952,061	7,357,651
07	<b>Total gross scholarships and fellowships</b>	29,455,644	27,641,259
	<u>Discounts and Allowances</u>		
08	<u>Discounts &amp; allowances applied to tuition &amp; fees</u>	16,839,109	14,299,387
09	<u>Discounts &amp; allowances applied to sales &amp; services of auxiliary enterprises (CV)</u> <b>CV= (E10-E08)</b>	1,010,981	1,476,457
10	<b>Total Discounts &amp; Allowances (CV)</b> <b>CV=(E07-E11)</b>	17,850,090	15,775,844
11	<b>Net scholarships and fellowships expenses after deducting discount &amp; allowances (from C10)</b>	11,605,554	11,865,415

**CV = Calculated Value**

CAVEATS



 Invalid data type    Fatal error    Confirm or explain    Edit explanation



**Integrated Postsecondary Education Data System 2006 - 07**

Institution: The University of Montana (180489) (1)

User ID: 88g2911

Institutions	Surveys	Reports	Tools	Help	LogOut
--------------	---------	---------	-------	------	--------

**Finance**

<a href="#">Hide Menu</a>	<b>Part F - Component Unit That Uses FASB Standards</b>	<a href="#">Instructions</a>
---------------------------	---	------------------------------

Part F - GASB **Component Unit** that uses FASB Standards  
Fiscal Year 2006

- ▶ Screening Questions
- ▶ Screening Questions
- ▶ Assets and Property
- ▶ Revenues
- ▶ Expenses
- ▶ Net Assets
- ▶ Scholarships
- ▼ GASB using FASB
  - ▶ **Form 1 Part 1**
  - ▶ Form 1 Part 2
  - ▶ Form 2 Part 1
  - ▶ Form 2 Part 2
- ▶ Endowment
- ▶ Census Data
- ▶ Debt and Assets

Names of entities included:

UM Foundation

Primary nature (purpose) of unit(s)

Fundraising to enhance education

**Report in whole dollars only**

Line No.

Current year amount

**Statement of Financial Position**

01	<u>Long-term investments</u>	121,346,715
02	Other <u>assets (CV)</u> CV=(F03-F01)	39,920,390
03	Total Assets	161,267,105
04	Total liabilities (CV) CV=(F03-F08)	23,028,630
	<u>Net Assets</u>	
05	<u>Temporarily restricted</u>	58,257,258
06	<u>Permanently restricted</u>	73,340,842
07	<u>Unrestricted (CV)</u> CV=[F08-(F05+F06)]	6,640,375
08	Total net assets	138,238,475

Invalid data type  
 Fatal error  
 Confirm or explain  
 Edit explanation



**Integrated Postsecondary Education Data System 2006 - 07**

Institution: The University of Montana (180489) (1)

User ID: 88g2911

Institutions	Surveys	Reports	Tools	Help	LogOut
--------------	---------	---------	-------	------	--------

**Finance**

<a href="#">Hide Menu</a>	Part F - Component Unit That Uses FASB Standards	<a href="#">Instructions</a> ?
---------------------------	--	--------------------------------

Part F - GASB **Component Unit** that uses FASB Standards  
Fiscal Year 2006

**Report in whole dollars only**

- ▶ Screening Questions
- ▶ Screening Questions
- ▶ Assets and Property
- ▶ Revenues
- ▶ Expenses
- ▶ Net Assets
- ▶ Scholarships
- ▼ GASB using FASB
  - ▶ Form 1 Part 1
  - ▶ **Form 1 Part 2**
  - ▶ Form 2 Part 1
  - ▶ Form 2 Part 2
- ▶ Endowment
- ▶ Census Data
- ▶ Debt and Assets

Line No.		Current year amount
	<b>Statement of Activities</b>	
09	<b>Investment return</b>	10,298,376
10	Other <b>revenues, gains, &amp; other support (CV)</b> CV=(F11-F09)	19,773,995
11	Total revenues, <b>gains, &amp; other support</b>	30,072,371
12	Total <b>expenses</b> .	19,232,000
12a	Expenses paid to institution ( <b>included in F12</b> )	12,626,150
13	Total <b>losses (CV)</b> CV=(F14-F12)	0
14	Total expenses and losses ( <b>CV</b> ) CV=(F11-F15)	19,232,000
15	<b>Change in net assets</b>	10,840,371
16	Net assets -- beginning of year	127,398,104
17	<b>Adjustments to beginning net assets(CV)</b> CV=[F18-(F15+F16)]	0
18	Net assets -- end of year ( <b>from F08</b> )	138,238,475

**CV = Calculated value**

CAVEATS

 Invalid data type    Fatal error    Confirm or explain    Edit explanation



**Integrated Postsecondary Education Data System 2006 - 07**

Institution: The University of Montana (180489) (1)

User ID: 88g2911

Institutions	Surveys	Reports	Tools	Help	LogOut
--------------	---------	---------	-------	------	--------

**Finance**

<a href="#">Hide Menu</a>	<b>Part F - Component Unit That Uses FASB Standards</b>	<a href="#">Instructions</a>
---------------------------	---	------------------------------

Part F - GASB **Component Unit** that uses FASB Standards  
Fiscal Year 2006

- ▶ Screening Questions
- ▶ Screening Questions
- ▶ Assets and Property
- ▶ Revenues
- ▶ Expenses
- ▶ Net Assets
- ▶ Scholarships

Names of entities included:

MT Grizzly Scholarship Associatio

Primary nature (purpose) of unit(s)

Fundraising to enhance education

**Report in whole dollars only**

- ▼ GASB using FASB
  - ▶ Form 1 Part 1
  - ▶ Form 1 Part 2
  - ▶ **Form 2 Part 1**
  - ▶ Form 2 Part 2
- ▶ Endowment
- ▶ Census Data
- ▶ Debt and Assets

Line No.

Current year amount

**Statement of Financial Position**

01	Long-term investments	16,294
02	Other assets (CV) CV=(F03-F01)	1,564,656
03	Total Assets	1,580,950
04	Total liabilities (CV) CV=(F03-F08)	187,848
<b>Net Assets</b>		
05	Temporarily restricted	886,788
06	Permanently restricted	0
07	Unrestricted (CV) CV=[F08-(F05+F06)]	506,314
08	Total net assets	1,393,102

Invalid data type  
 Fatal error  
 Confirm or explain  
 Edit explanation



**Integrated Postsecondary Education Data System 2006 - 07**

Institution: The University of Montana (180489) (1)

User ID: 88g2911

Institutions	Surveys	Reports	Tools	Help	LogOut
--------------	---------	---------	-------	------	--------

**Finance**

<a href="#">Hide Menu</a>	Part F - Component Unit That Uses FASB Standards	<a href="#">Instructions</a> ?
---------------------------	--	--------------------------------

Part F - GASB **Component Unit** that uses FASB Standards  
Fiscal Year 2006

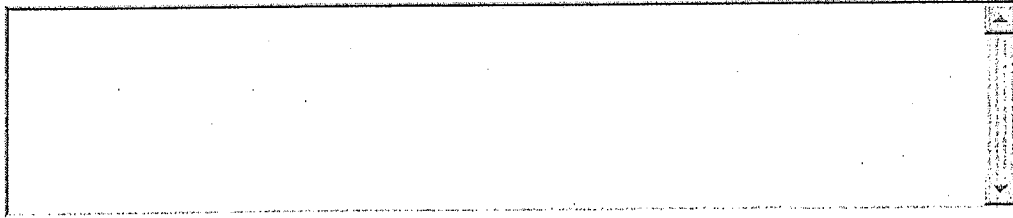
- ▶ Screening Questions
- ▶ Screening Questions
- ▶ Assets and Property
- ▶ Revenues
- ▶ Expenses
- ▶ Net Assets
- ▶ Scholarships
- ▼ GASB using FASB
  - ▶ Form 1 Part 1
  - ▶ Form 1 Part 2
  - ▶ Form 2 Part 1
  - ▶ **Form 2 Part 2**
- ▶ Endowment
- ▶ Census Data
- ▶ Debt and Assets

**Report in whole dollars only**

Line No.		Current year amount
<b>Statement of Activities</b>		
09	<b>Investment return</b>	11,956
10	<b>Other revenues, gains, &amp; other support (CV)</b> CV=(F11-F09)	1,864,522
11	<b>Total revenues, gains, &amp; other support</b>	1,876,478
12	<b>Total expenses</b>	1,502,807
12a	<b>Expenses paid to institution (included in F12)</b>	0
13	<b>Total losses (CV)</b> CV=(F14-F12)	0
14	<b>Total expenses and losses (CV)</b> CV=(F11-F15)	1,502,807
15	<b>Change in net assets</b>	373,671
16	Net assets -- beginning of year	1,019,431
17	<b>Adjustments to beginning net assets (CV)</b> CV=[F18-(F15+F16)]	0
18	Net assets -- end of year (from F08)	1,393,102

**CV = Calculated value**

CAVEATS



 Invalid data type    Fatal error    Confirm or explain    Edit explanation

Previous

Next



**IPEDS Prior Year Data Revision System 2006 - 07**

Institution: The University of Montana (180489) (1)

User ID: 88g2911

[Institutions](#)   [Surveys](#)   [Reports](#)   [Tools](#)   [Help](#)   [LogOut](#)

**Finance**

[Hide Menu](#)

Part H - Details of Endowment Assets

[Instructions](#) ?

- ▶ Screening Questions
- ▶ Screening Questions
- ▶ Assets and Property
- ▶ Revenues
- ▶ Expenses
- ▶ Net Assets
- ▶ Scholarships
- ▶ GASB using FASB
- ▼ Endowment
  - ▶ **Endowment data**
  - ▶ Census Data
  - ▶ Debt and Assets

**Fiscal Year 2006**

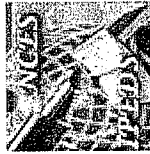
Report in whole dollars only

Line No.	Value of <u>Endowment Assets</u>	Market Value	Prior Year Amounts
01	Value of <u>endowment assets</u> at the beginning of the fiscal year	97,630,835	9,411,426
02	Value of <u>endowment assets</u> at the end of the fiscal year	108,198,123	14,970,908

Invalid data type  
  Fatal error  
  Confirm or explain  
  Edit explanation

**Data saved successfully**





**Integrated Postsecondary Education Data System 2006 - 07**

Institution: The University of Montana (180489) (1)

User ID: 88g2911

- Institutions
- Surveys
- Reports
- Tools
- Help
- LogOut

**Finance**

<b>Hide Menu</b>	Part J - Revenue Data for Bureau of Census	<b>Instructions</b> ?
------------------	--	-----------------------

**Part J - Revenues (Census Bureau)  
Fiscal Year 2006**

					Amount
Source and type	Total for all funds and operations (includes endowment funds, but excludes component units)	Education and general/independent operations	Auxiliary enterprises	Hospitals	Agriculture extension/experiment services
	(1)	(2)	(3)	(4)	(5)
▶ Screening Questions					
▶ Screening Questions					
▶ Assets and Property					
▶ Revenues					
▶ Expenses					
▶ Net Assets					
▶ Scholarships					
▶ GASB using FASB					
▶ Endowment					
▶ Census Data					
▶ <b>Revenues</b>					
▶ Expenditures					
▶ Debt and Assets					
▶ Revenue from the state government:					
State					
04 appropriations, current & capital	40,274,782	39,281,787			992,995
05 State grants and contracts	0				
Revenue from local governments:					
Local					
06 appropriation, current & capital	0				

Local government grants/contracts	07	0			
Receipts from property and non-property taxes	08				
Gifts and private grants, including capital grants	09	16,442,030			
Interest earnings	10	4,447,867			
Dividend earnings	11				
Realized capital gains	12				

CAVEATS

 Invalid data type  
  Fatal error  
  Confirm or explain  
  Edit explanation



**NCES** National Center for Education Statistics

**Integrated Postsecondary Education Data System 2006 - 07**

Institution: The University of Montana (180489) (1)

User ID: 88g2911

Institutions      Surveys      Reports      Tools      Help      LogOut

**Finance**

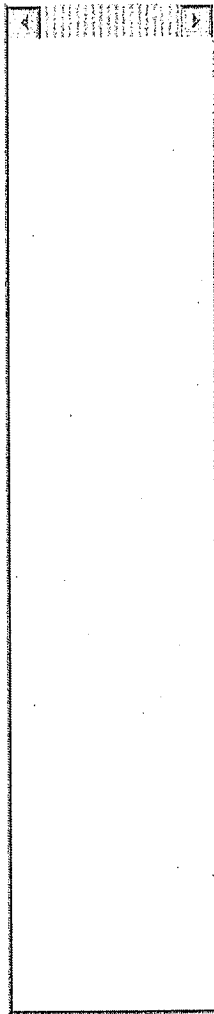
Hide Menu      Part K - Expenditure Data for Bureau of Census      Instructions

**Part K - Expenditures  
Fiscal Year 2006**

Category	Total for all funds and operations (includes endowment funds, but excludes component units)	Education and general/independent operations	Auxiliary enterprises	Hospitals	Agriculture extension/experiment services
	(1)	(2)	(3)	(4)	(5)
01 Salaries and wages	117,406,380	103,480,828	13,289,366	0	636,186
02 Employee benefits, total	30,978,569	26,937,236	3,873,911	0	167,422
Payment to state					
retirement funds (maybe included in line 02 above)	8,113,244	7,151,013	918,419	0	43,812
04 Current expenditures other than salaries	55,864,195	46,285,252	9,392,364	0	186,579
Capital outlay:					
05 Construction	16,956,500	16,956,500			
06 Equipment purchases	4,744,665	4,744,665			
07 Land purchases	0	0			
08 Interest on debt outstanding, all funds & activities	5,360,057				
09 Scholarships/fellowships	29,455,644	29,455,644			
<b>Total</b>	<b>235,011,138</b>	<b>203,607,992</b>	<b>28,756,891</b>	<b>0</b>	<b>186,579</b>

(2) 235,011,138  
EAC  
(3) 27,474,060  
(Sum) 262,485,198

CAVEATS



 Invalid data type  Fatal error  Confirm or explain  Edit explanation



**Integrated Postsecondary Education Data System 2006 - 07**

Institution: The University of Montana (180489) (1)

User ID: 88g2911

Institutions	Surveys	Reports	Tools	Help	LogOut
--------------	---------	---------	-------	------	--------

**Finance**

<a href="#">Hide Menu</a>	Part L - Debt and Assets, page 1	<a href="#">Instructions</a>
---------------------------	----------------------------------	------------------------------

**Part L - Debt and Assets  
Fiscal Year 2006**

- ▶ Screening Questions
- ▶ Screening Questions
- ▶ Assets and Property
- ▶ Revenues
- ▶ Expenses
- ▶ Net Assets
- ▶ Scholarships
- ▶ GASB using FASB
- ▶ Endowment
- ▶ Census Data
- ▼ Debt and Assets

**Debt**

Category	Amount
01 Long-term debt outstanding at beginning of fiscal year	120,096,863
02 Long-term debt issued during fiscal year	24,260,000
03 Long-term debt retired during fiscal year	14,648,855
04 Long-term debt outstanding at end of fiscal year	129,708,008
05 Short-term debt outstanding at beginning of fiscal year	
06 Short-term debt outstanding at end of fiscal year	

▶ **Debt**

▶ Assets

CAVEATS

Invalid data type  
 Fatal error  
 Confirm or explain  
 Edit explanation



### Integrated Postsecondary Education Data System 2006 - 07

Institution: The University of Montana (180489) (1)

User ID: 88g2911

Institutions	Surveys	Reports	Tools	Help	LogOut
--------------	---------	---------	-------	------	--------

#### Finance

Hide Menu	Part L - Debt and Assets, page 2	Instructions ?
-----------	----------------------------------	----------------

#### Part L - Debt and Assets (page 2) Fiscal Year 2006

- ▶ Screening Questions
- ▶ Screening Questions
- ▶ Assets and Property
- ▶ Revenues
- ▶ Expenses
- ▶ Net Assets
- ▶ Scholarships
- ▶ GASB using FASB
- ▶ Endowment
- ▶ Census Data
- ▼ Debt and Assets
  - ▶ Debt
  - ▶ **Assets**

#### Assets

Category	Amount
07 Total cash and security assets held at end of fiscal year in sinking or debt service funds	1,697,318
08 Total cash and security assets held at end of fiscal year in bond funds	23,660,867
09 Total cash and security assets held at end of fiscal year in all other funds	65,628,665

#### CAVEATS

Invalid data type  
  Fatal error  
  Confirm or explain  
  Edit explanation