

# FALL MOVE-IN PACKING GUIDELINES

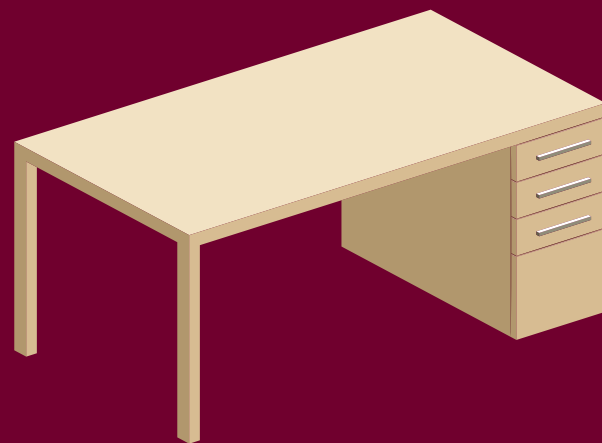
## WHAT'S INCLUDED?

*All Residence Hall rooms are equipped with:*

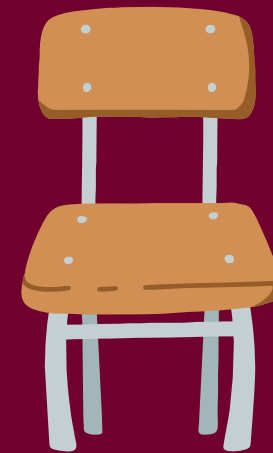


*standard twin bed*

*Knowles and Turner Hall have  
extra-long twin beds*



*desk*



*chair*



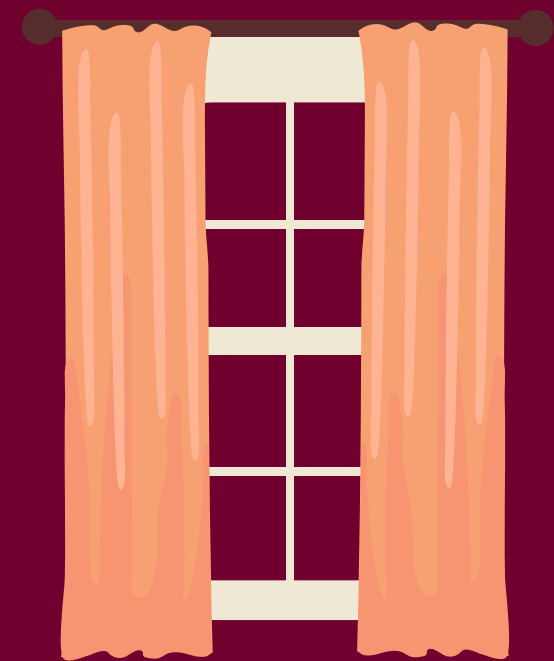
*wastebasket*



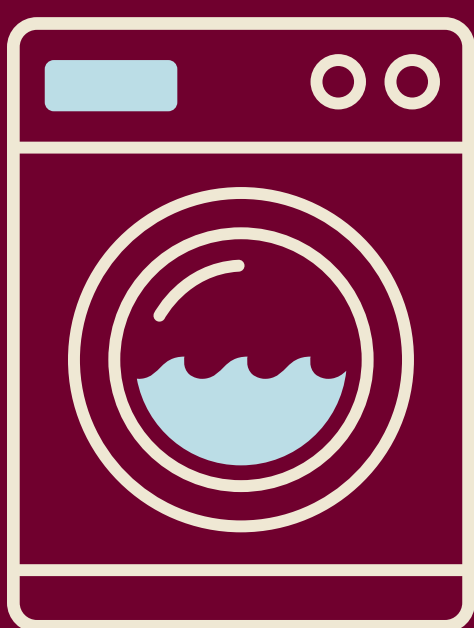
*overhead light*



*closet*

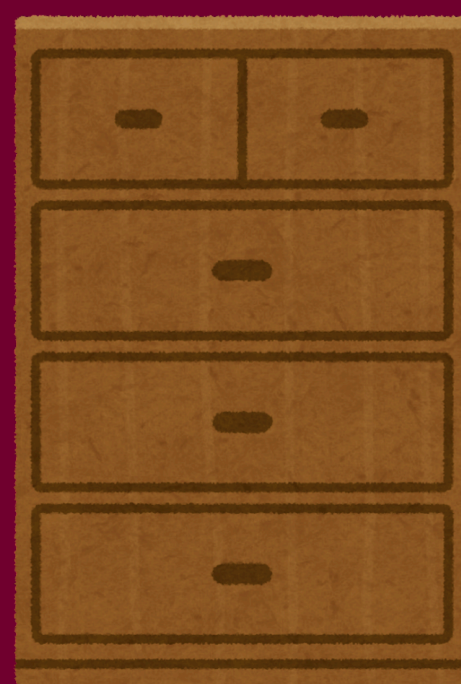


*window coverings*



*coinless laundry*

*located in laundry room*



*dresser*



*bookshelf*

*excluding Pantzer*



*network  
connection*

# WHAT SHOULD I BRING?

- Personal care items, toiletry basket, shower shoes*
- Sheets, pillow, blankets, mattress pad*
- Clothes hangers*
- Bath towels*
- School supplies*
- Desk study lamp*
- Laundry basket or bag, laundry detergent*



## OTHER ITEMS TO CONSIDER:

- Television*
- Throw Rug*
- Pictures/Posters*
- Small Fan*
- Microwave*
- Refrigerator  
(under 4.0 cubic feet)*

# ***WHAT NOT TO BRING***

*The following items are not allowed in the Residence Halls:*

- ⊘ Barbecues and grills***
- ⊘ Candles and incense***
- ⊘ Crockpots, electric fryers, rice cookers***
- ⊘ Electric grills, toaster/toaster ovens***
- ⊘ Fog, smoke, and haze machines***
- ⊘ Hookahs, e-cigarettes, vaporizers***
- ⊘ Hot plates***
- ⊘ Hoverboards, OneWheels, etc.***
- ⊘ Portable Space Heaters***
- ⊘ Pressure cookers and instant pots***
- ⊘ Air conditioner, unless approved by the Office for Disability Equity***