

# IE-MT Leadership Conference 2010

## SAF Organizational Structure

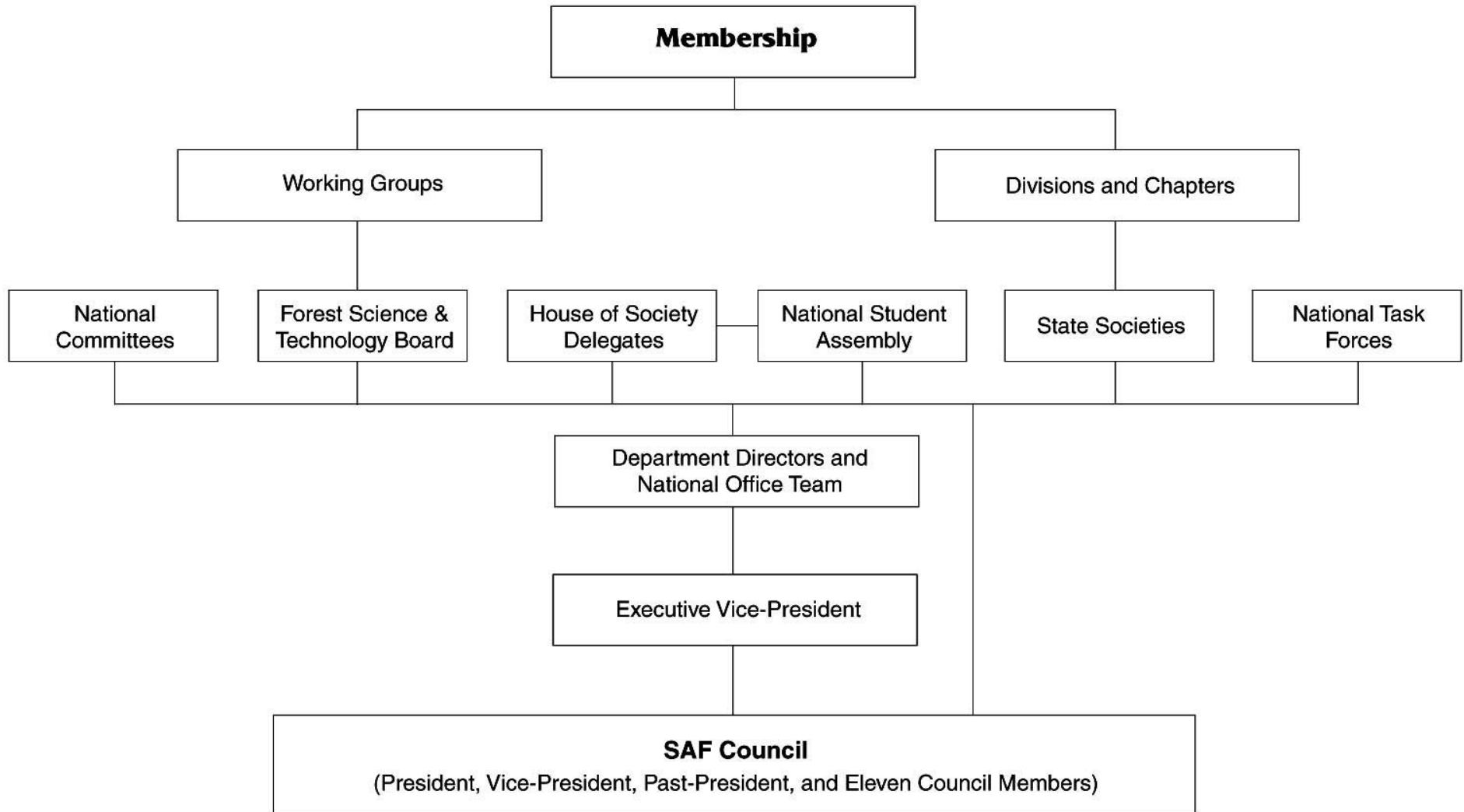
HOW IS SAF STRUCTURED?

LOCALLY?

NATIONALLY?



# SAF Structure

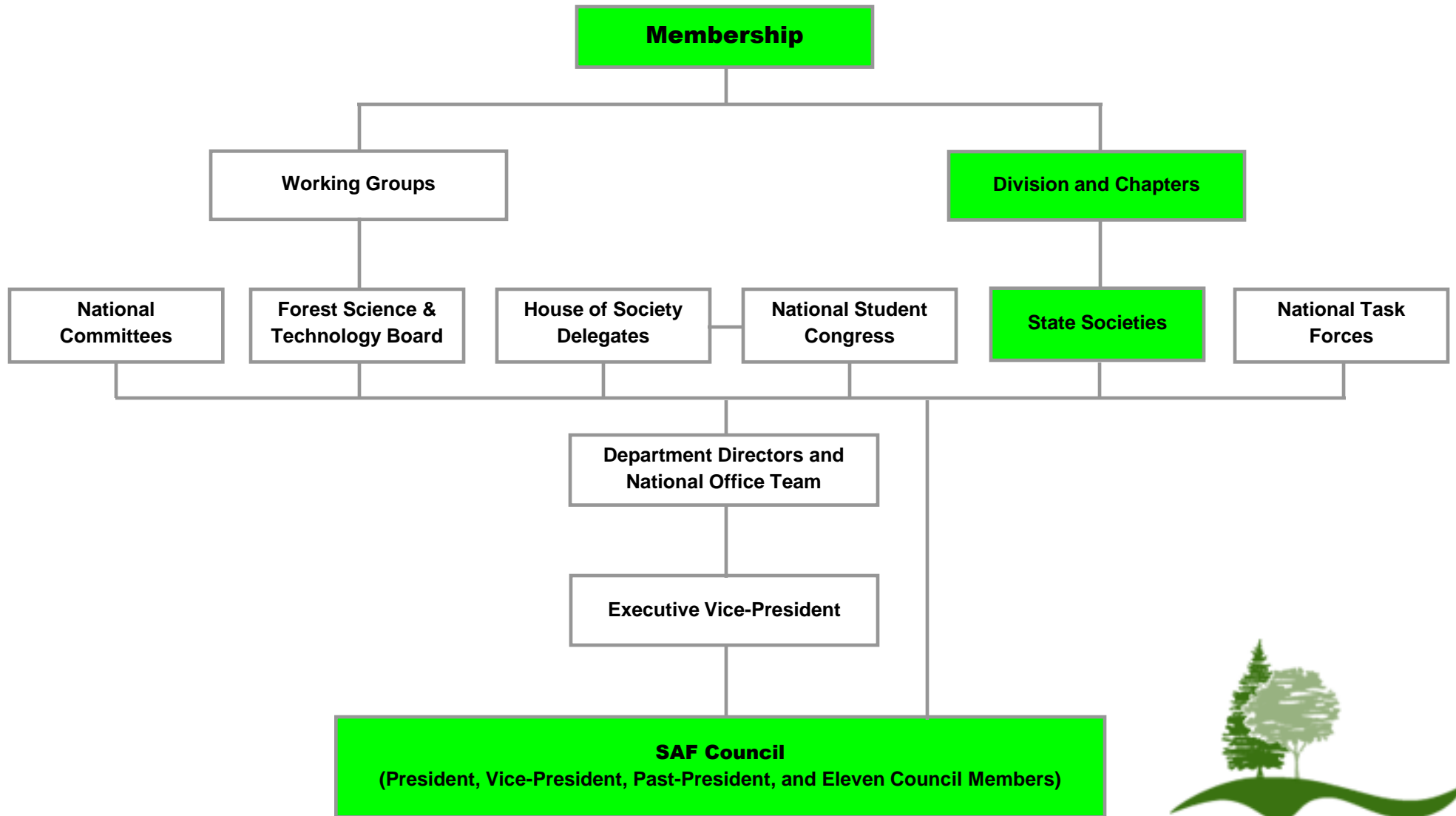


# Membership

- The SAF membership is at the top of the organizational chart.
- It is our members that drive SAF activities.
- It is our members that have developed the mission, Constitution and Bylaws of the Society.
- It is our membership that sets policy, and action plans to best meet the mission of the Society.



# SAF Structure



# State Societies, Divisions and Chapters

- State Societies are geographical, constitutional, grassroots units of the Society.
- State Societies may be further divided into divisions and/or chapters and include student chapters.





Society of American Foresters  
*Growing better all the time*

## State Societies Map



# Role of SAF COUNCIL

What is the Role of Council?



# Role of SAF COUNCIL

The SAF Council is the highest governing body in SAF. Its goal is to provide leadership and direction to the Society of American Foresters and to ensure the achievement of its mission.





# Role of SAF COUNCIL

Some of the Council's duties include:

- ▣ determine the strategic plan for the Society and review it annually;
- ▣ review annual and long-range budget projections
- ▣ review SAF national office programs as they relate to the mission;



# Role of SAF COUNCIL

Some of the Council's duties include:

- ▣ serve as a communications link among the members of their voting district, HSD, the Forest Science and Technology Board, and Council regarding pertinent issues;
- ▣ represent SAF to the public



# Role of SAF COUNCIL

Some of the Council's duties include:

- ensure that SAF operates at all levels in compliance with antitrust laws, as stated in our Antitrust Policy.



# SAF COUNCIL

WHO SITS ON COUNCIL  
AND FOR HOW LONG?



# SAF COUNCIL

The president, vice-president, immediate past-president, and 11 elected members (one from each voting district) serve on Council.



# SAF COUNCIL

The vice-president is a Fellow or Professional Member elected by the voting membership of the Society for a three-year succession, without eligibility for re-election.



# SAF COUNCIL

The vice-president serves one year as vice-president, one year as president, and one year as immediate past-president.



# SAF COUNCIL

Each Council member, elected by his or her voting district, serves a three-year term and shall not serve consecutive terms nor be elected for more than two terms.





# SAF COUNCIL

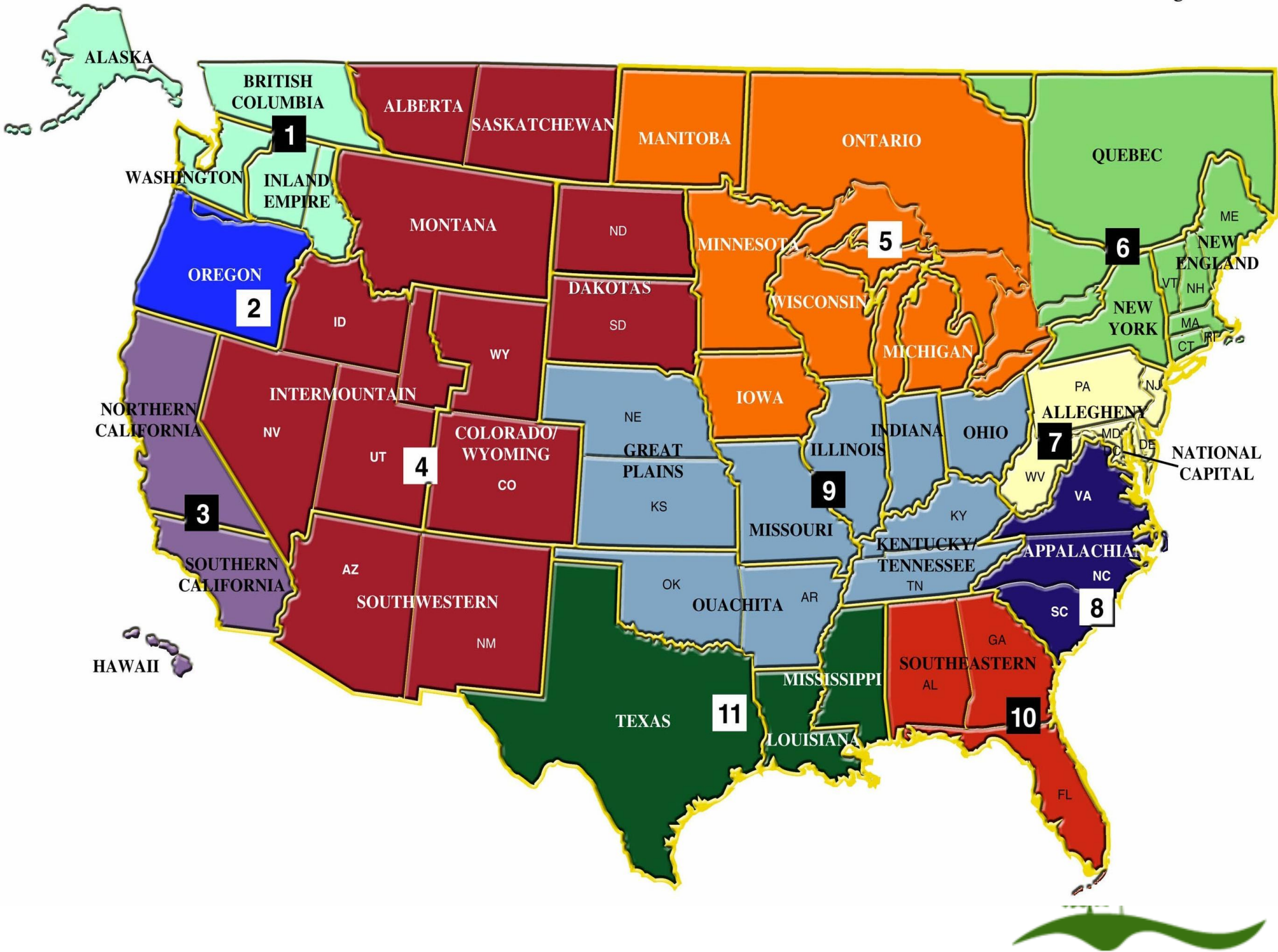
*WHAT IS A VOTING DISTRICT?*



# SAF COUNCIL

Voting districts contain one or more state societies and/or provinces of Canada while conforming as much as possible to state society boundaries.



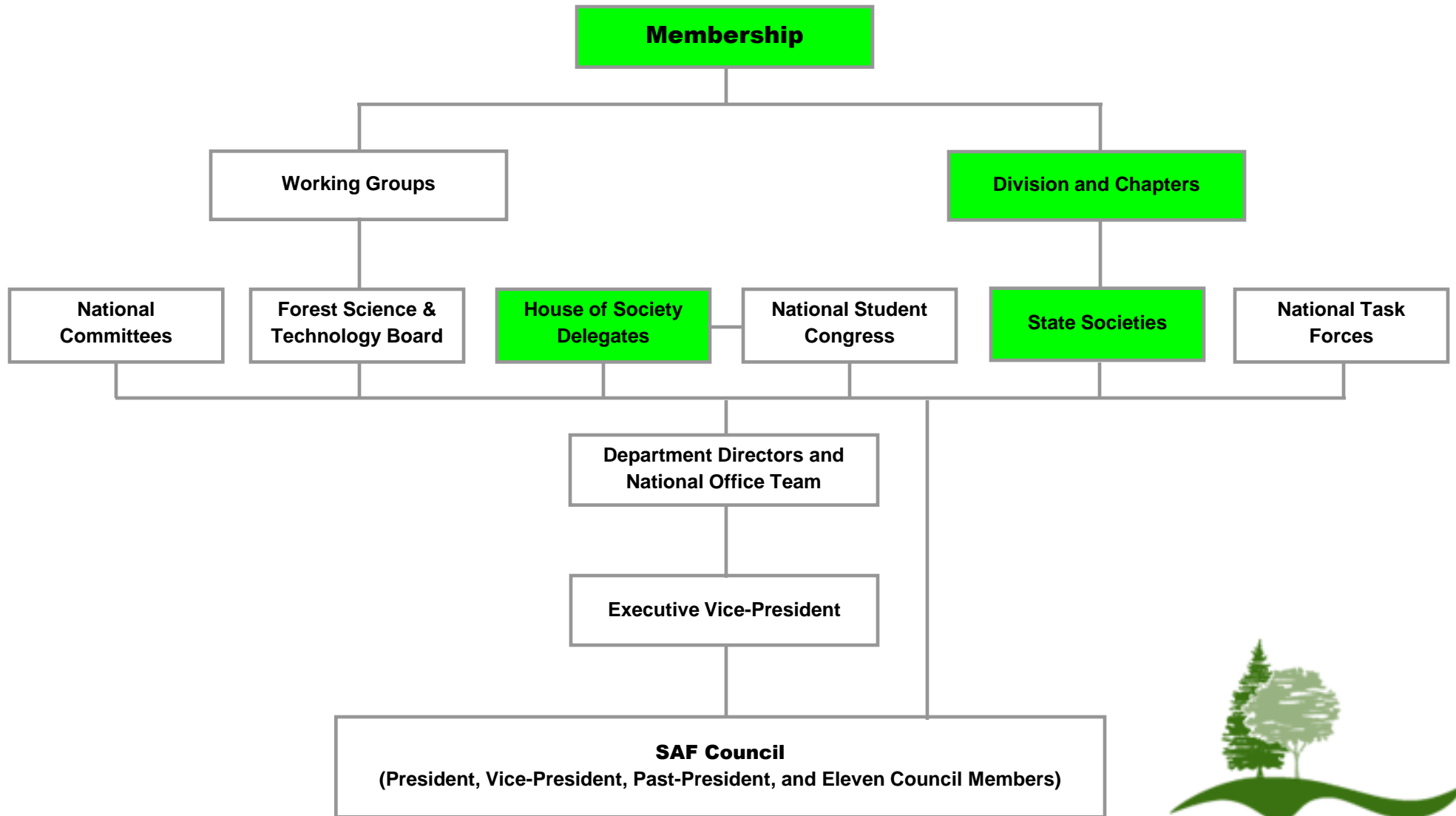


# SAF COUNCIL

Voting districts must contain no fewer than 7 or more than 11 percent of the members of the Society eligible to vote.



# SAF Structure



# House of Society Delegates

- Grassroots organizational body comprised of:
  - Delegate and Alternate Delegate (Chair & Chair-elect) from each of the 32 State, Multi-State, Intra-State Societies
  - As well as a representative of the Student Executive Council (SEC).



# House of Society Delegates

- Under the direction of:
  - Chair (Tamara Cushing – SC)
  - and Chair-elect (E Lynn Burkett - DC)



# House of Society Delegates

- Means for members to work in partnership with Council and national office staff on SAF and professional affairs
- To identify and forward forest policy issues



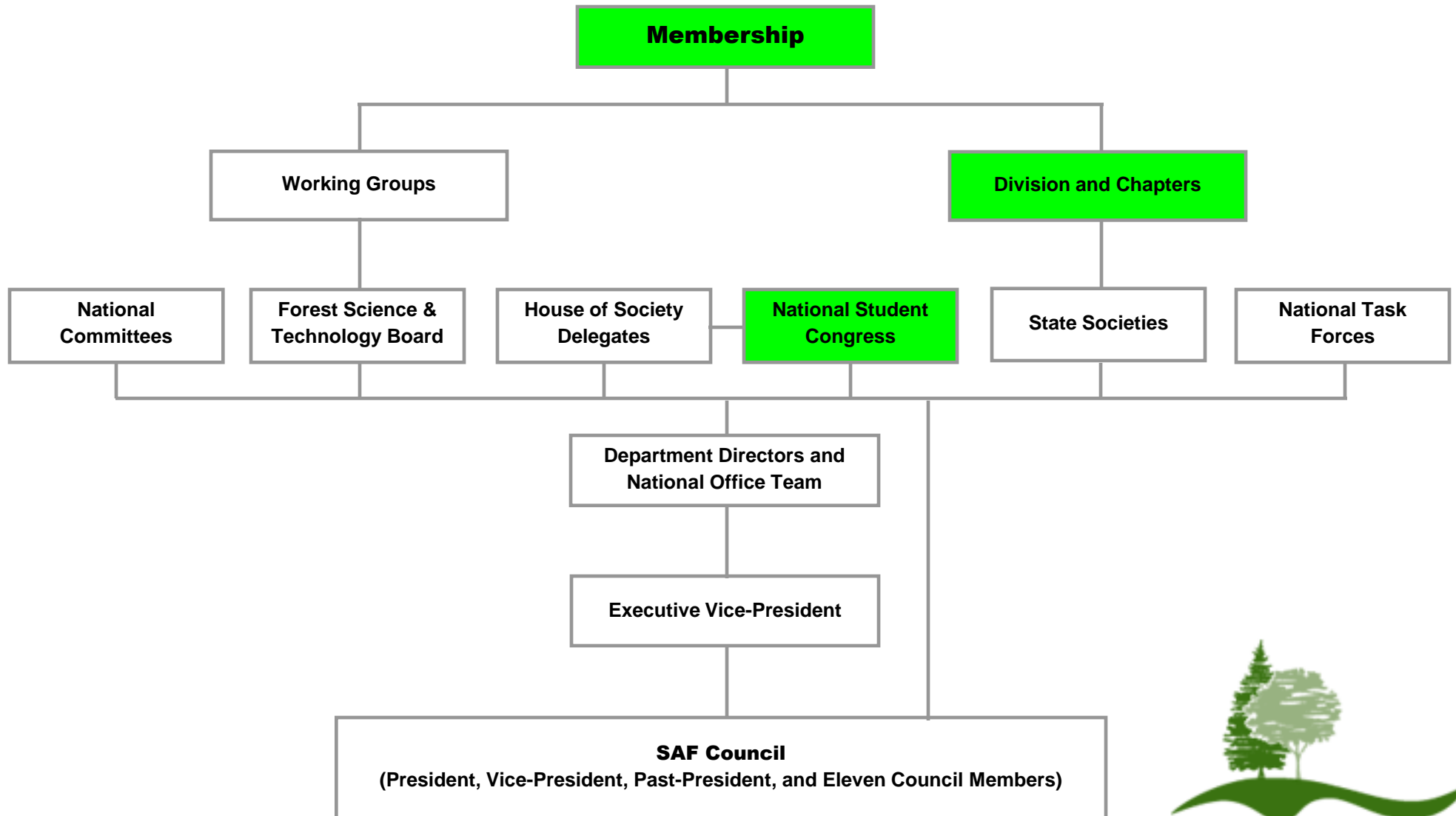


# House of Society Delegates

- A channel of communications between state societies, SEC, Council and national office staff
- A forum for exchange and discussion of ideas to improve SAF and the forestry profession



# SAF Structure



# National Student Congress

- The National Student Congress is the grassroots organizational body comprised of:
  - All Student Chapter Chairs
  - Current Chair is Jamie Jacobs of CSU
  - Chair-elect is Bill Sweeney of Haywood Community College - NC

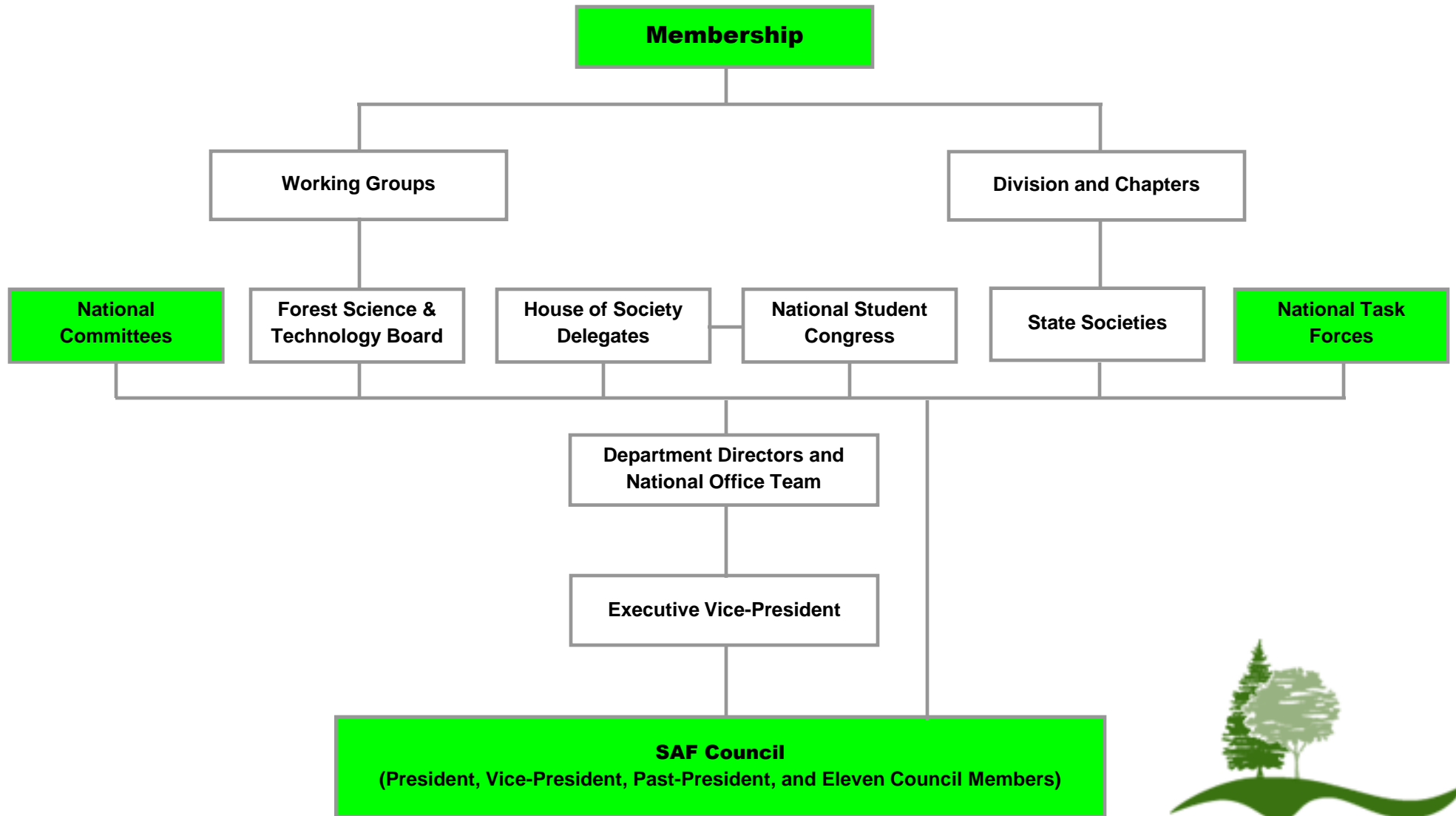


# National Student Congress

- The National Student Congress
- Organizational structure is in place.
  - 11-member Student Executive Committee
  - Selection of a National Student Congress Representative to Council.



# SAF Structure



# Task Forces and National Committees

- Council establishes task forces to accomplish specific projects and studies.
- National committees are long term and carry out continuing Society activities.



# Task Forces and National Committees

- Current task force on Forest Sustainability.
- Currently 16 National committees including:
  - Accreditation
  - Certification Review Board
  - Forest Policy
  - Leadership Development



# Task Forces and National Committees

- Currently National committees include:
  - Ethics
  - Communications
  - Cultural Diversity
  - Education Policy Review
  - Professional Recognition
  - National Nominating



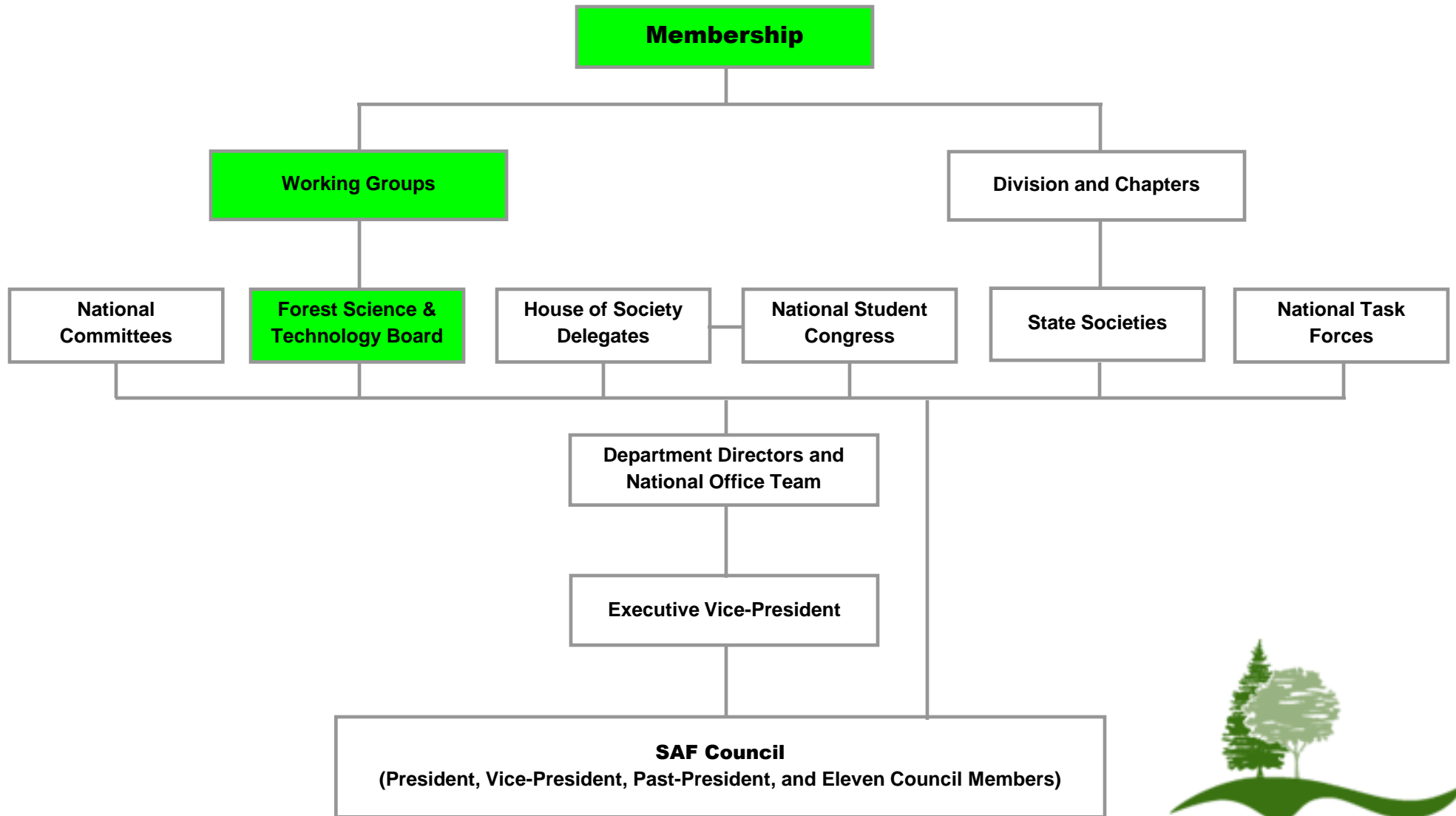


# Task Forces and National Committees

- Currently National committees include:
- World Forestry
- Tellers
- 2010 Convention Program
- 2011 Convention Program
- Forest Tech School Accreditation
- RNRF Coordinating Committee



# SAF Structure



# Working Groups

- Target distinct interests in six specific forest science areas.
- Working Groups are the voice of current scientific thinking of their respective topics.

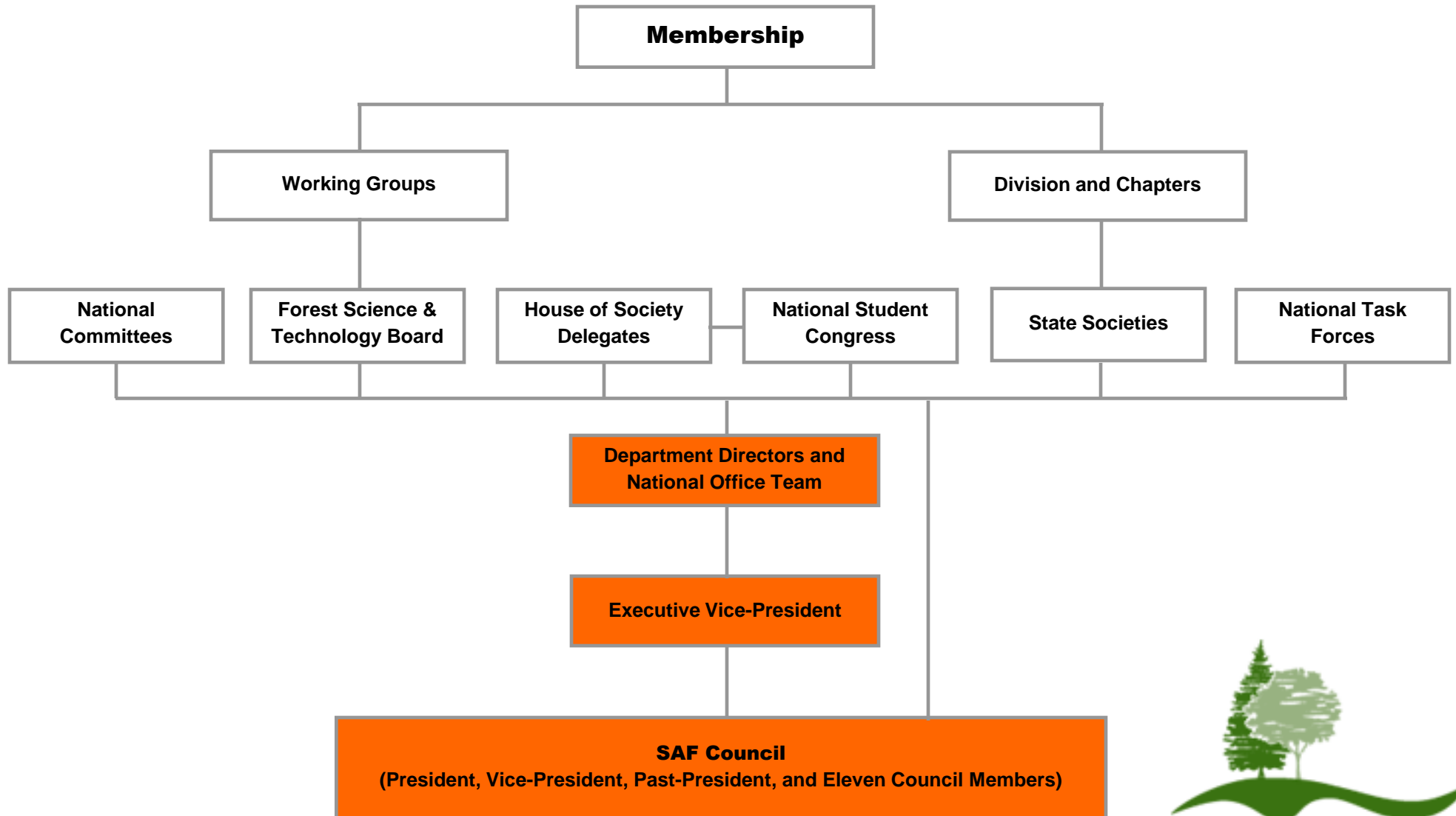


# Forest Science & Technology Board

- Provides an effective means for the development, dissemination, and use of forest sciences.
- Current chair is Bill Rockwell



# SAF Structure



# Executive Vice President

The executive vice-president (EVP) is the executive officer of the Society and serves as an officer along with the president and vice-president. The EVP serves for a two year term; Council is responsible for the appointment of the EVP.



# Executive Vice President

- Executive Officer of the Society under general direction of Council.
- Performs the duties of Secretary Treasurer.
- Is the custodian of the funds and securities of the Society.



# National Office

- Manages SAF programs,
- Provides member services,
- Supports grassroots units and SAF organizational bodies.





# National Office Staff

- Includes:
- Director Field Service – Louise Murgia;
- Director Forest Policy – Erica Rhoad;
- Director Marketing & Membership -  
Christopher Whited

Contact @ 866-897-8720

see [www.safnet.org](http://www.safnet.org) for extension



# OR-WA Leadership Conference 2009

## SAF Organizational Structure

### HOW IS SAF STRUCTURED?

- More information at [www.safnet.org](http://www.safnet.org)



# Role of SAF COUNCIL

Current District Representatives:

D1 Chuck Lorenz - term: 2009-2011

[c\\_4str@yahoo.com](mailto:c_4str@yahoo.com)

D4 G. Lynn Sprague - term: 2009-2011

GLSprag@aol.com

