

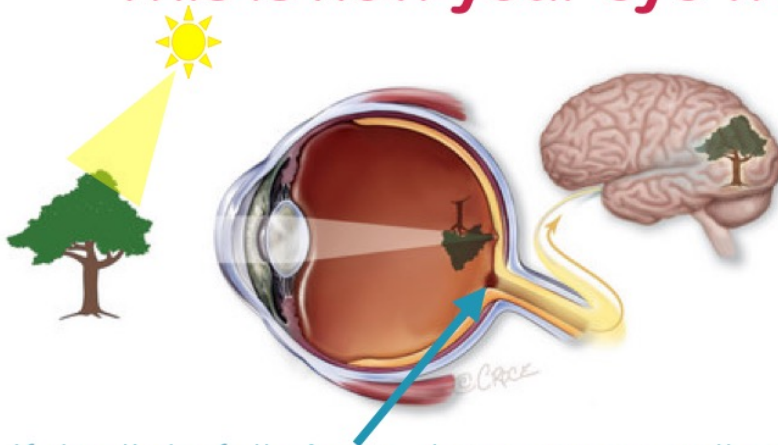
# Find your Eye's Blind Spot!



1. Hold this sheet of paper a foot or so away from your face.
2. Cover your right eye and stare with your left eye at the cross.  
(While staring at the cross, you still see the dot out of the corner of your eye.)
3. Now, slowly move the sheet towards your face as you continue to stare at the + sign.

**At some point, the dot should disappear. Why does this happen?**

## This is how your eye works



If the light falls **here**, there are no cells to detect the light so your brain fills in the information based on the surrounding information. This is called your

**Blind Spot.**