

The University of Montana

Data Digest

2007-2008



The University of
Montana

Publication Date: November 1, 2007

Any questions concerning material contained in this book should be directed to:

The Office of University Planning, Budgeting, and Analysis

UH 217

The University of Montana

32 Campus Drive

Missoula, MT 59812

Telephone: 406/243-5661

Email: museaw@mso.umt.edu

URL: <http://www.umt.edu/plan/>

TABLE OF CONTENTS

QUICK FACTS

STUDENTS

Total Enrollments from 1895 through 2007..... 1
 Fall Semester Headcount Enrollment by Level..... 2
 Fiscal Year FTE Enrollment by Student Level..... 3
 Fall Semester Enrollment by Gender..... 4
 Women as a Percentage of Enrollment by Level..... 5
 Fall Semester Enrollment by Ethnic Category..... 6
 Minorities as a Percentage of Enrollment by Level..... 7
 Fall Semester Enrollment by Full Time and Part Time..... 8
 Who are the Part Time Students?..... 9
 Fall Semester Headcount Enrollments by Residency..... 10
 Fall Semester Enrollment by Age..... 11
 Nonresident Enrollment – Fiscal Year FTE..... 12
 New Students Enrolled by Level..... 13
 Retention and Graduation Rates of New Freshmen..... 14

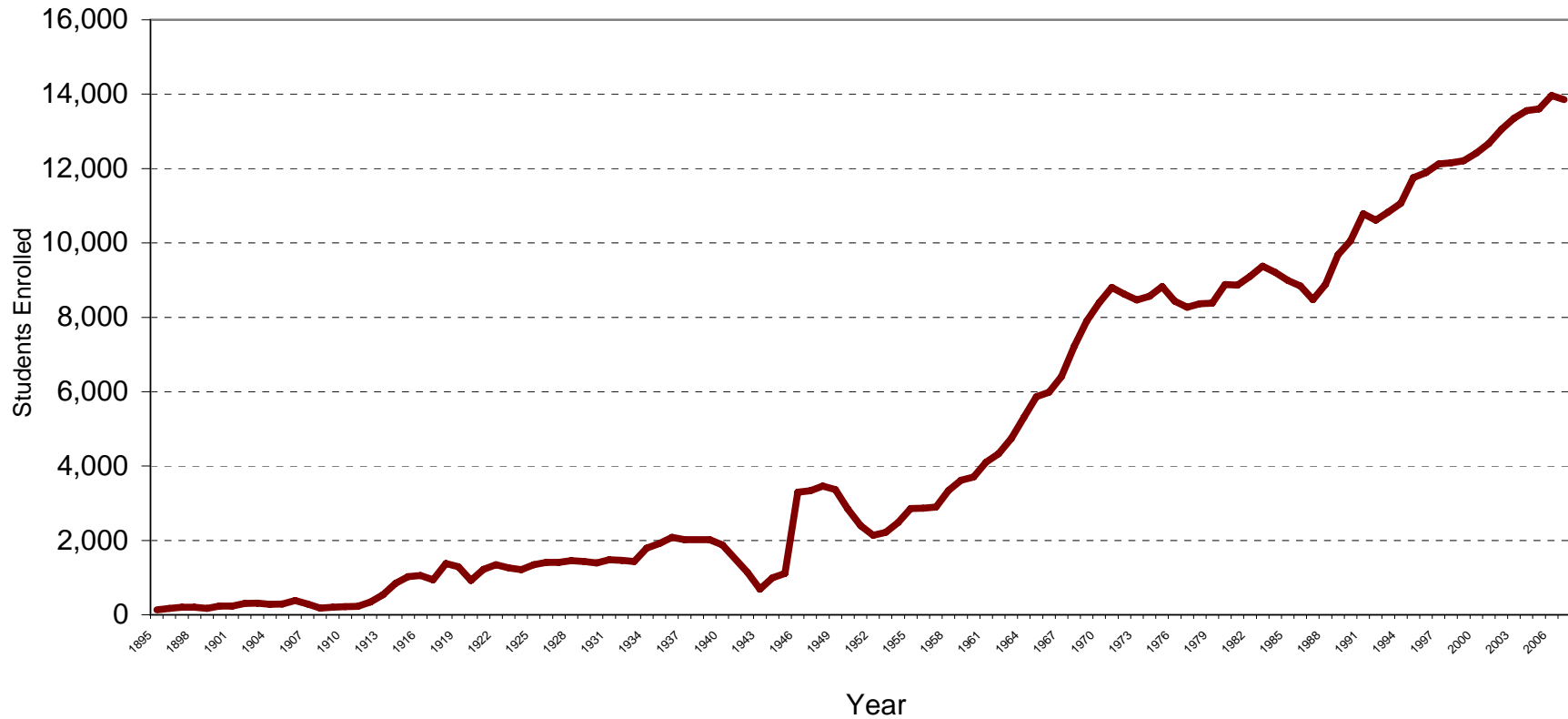
FINANCE

Sources of General Funds Revenues..... 15
 General Funds Expenditures by Program..... 16
 General Funds Expenditures by Category..... 17

FUTURE ITEMS TO BE ADDED

Fall Semester Average Credit Load by Level
Student Credit Hours by Level
Historical Cost of Attendance
Scholarships and Fee Waiver Information
Financial Aid Information
Degrees Conferred by Level
Faculty and Staff Information
Average Fall Course Sections per Faculty
Average Class Size by Discipline
Distribution of Alumni
Net Assignable Square Footage by Program
Classroom Space and Utilization

Total Enrollments from 1895 through 2007



Notes: Figures for 1895 through 1919 are net total enrollment, including summer, prep, short, and correspondence courses; remaining years are fall enrollments only.
 Converted to the semester calendar in 1992.
 College of Technology was added in 1995.

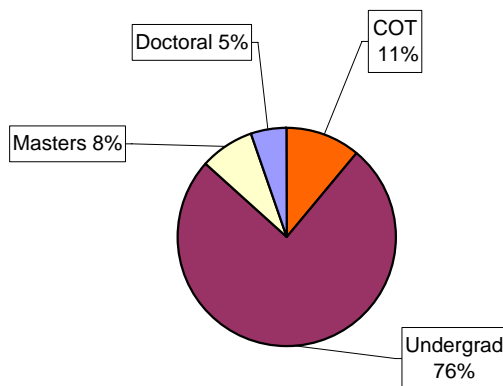
Fall Semester Headcount Enrollment by Student Level

	1997	1998	1999	2000	2001	2002	2003	2004	2005	2006	2007
College of Technology	831	806	818	828	844	933	964	1,069	1,276	1,484	1,532
All Undergraduates	9,992	9,910	9,880	10,094	10,243	10,482	10,608	10,602	10,451	10,585	10,465
Early High School	35	27	29	32	27	32	22	18	23	41	17
Freshman	2,894	2,888	2,844	2,978	3,117	3,132	3,123	3,119	2,992	2,856	2,781
Sophomores	1,951	2,026	2,093	2,026	2,021	2,195	2,135	2,176	2,196	2,243	2,104
Juniors	1,944	1,921	1,922	2,042	1,993	2,015	2,107	2,117	2,100	2,090	2,166
Seniors	2,375	2,322	2,261	2,278	2,362	2,375	2,457	2,409	2,398	2,527	2,628
Nondegree Undergraduate	149	114	119	117	107	103	76	93	103	205	183
Postbaccalaureate ¹	644	612	612	621	616	630	688	670	639	623	586
All Graduate Students	1,301	1,441	1,510	1,491	1,581	1,643	1,780	1,887	1,875	1,892	1,861
Masters Candidates	857	961	1,036	1,003	1,066	1,101	1,203	1,171	1,149	1,156	1,122
Doctoral Candidates	444	480	474	488	515	542	577	716	726	736	739
Total	12,124	12,157	12,208	12,413	12,668	13,058	13,352	13,558	13,602	13,961	13,858
Percent COT	6.9%	6.6%	6.7%	6.7%	6.7%	7.1%	7.2%	7.9%	9.4%	10.6%	11.1%
Percent Undergraduate	82.4%	81.5%	80.9%	81.3%	80.9%	80.3%	79.4%	78.2%	76.8%	75.8%	75.5%
Percent Graduate	10.7%	11.9%	12.4%	12.0%	12.5%	12.6%	13.3%	13.9%	13.8%	13.6%	13.4%

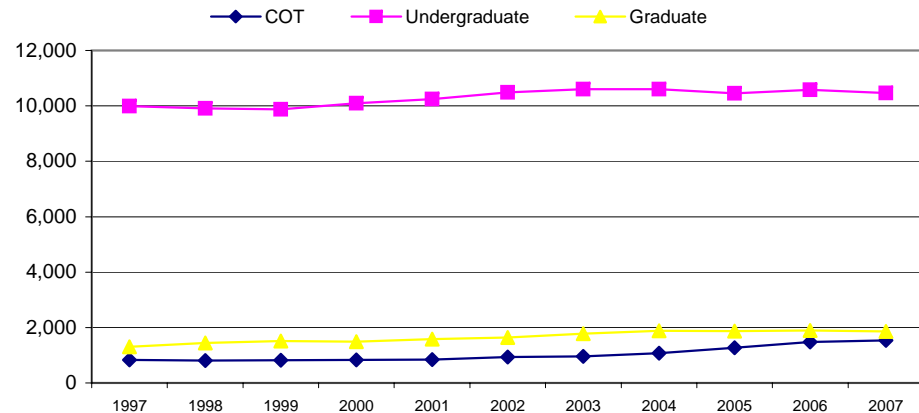
Source: Regent's Report A - Part A

¹ Includes nondegree graduate students

**Enrollment by Student Level
Fall 2007**



Headcount Enrollment by Student Level



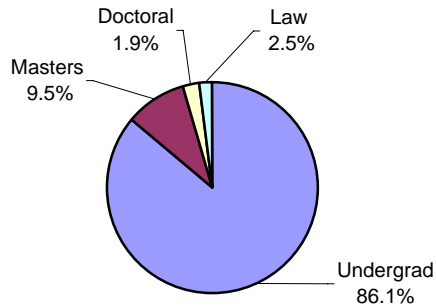
Fiscal Year FTE Enrollment by Student Level

	1997	1998	1999	2000	2001	2002	2003	2004	2005	2006	2007
All Undergraduates	9,982	10,147	10,051	9,850	9,907	10,131	10,272	10,327	10,270	10,303	10,449
College of Technology	749	794	766	776	797	802	885	896	917	1,019	1,098
Lower Division	6,079	6,153	6,098	6,001	5,974	6,119	6,217	6,262	6,081	6,115	6,103
Upper Division	3,154	3,199	3,188	3,073	3,136	3,210	3,170	3,169	3,273	3,169	3,248
All Graduate Students	1,037	1,098	1,252	1,440	1,463	1,501	1,545	1,687	1,678	1,680	1,691
Masters Candidates		669	777	1,000	1,003	1,029	1,057	1,170	1,145	1,158	1,152
Law		295	313	290	312	302	304	300	296	291	307
Doctoral Candidates		134	163	151	149	170	185	216	238	231	232
Total	11,018	11,245	11,304	11,290	11,370	11,632	11,817	12,014	11,949	11,983	12,140
Percent Undergraduate	90.6%	90.2%	88.9%	87.2%	87.1%	87.1%	86.9%	86.0%	86.0%	86.0%	86.1%
Percent Graduate	9.4%	9.8%	11.1%	12.8%	12.9%	12.9%	13.1%	14.0%	14.0%	14.0%	13.9%

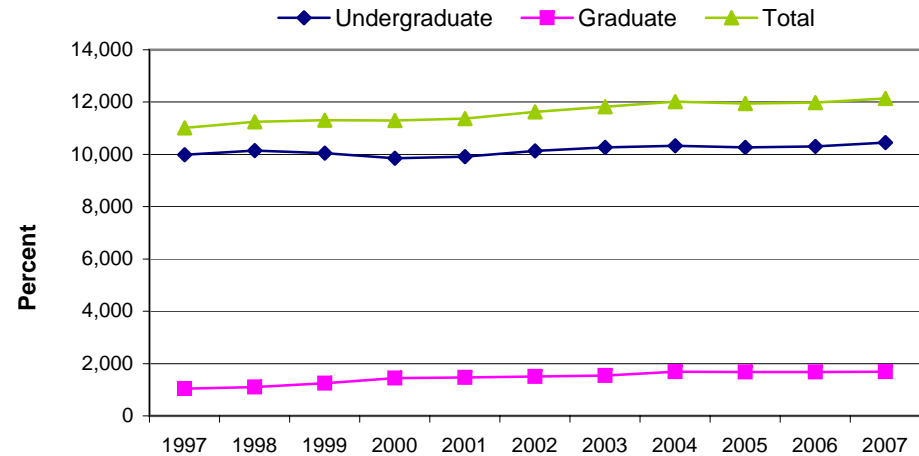
Source: Regent's Report C

Note: Beginning in FY 2000, SCH produced by graduate students taking 400 level courses are counted toward graduate enrollment.

FTE Enrollment by Student Level
Fiscal Year 2007



Fiscal Year FTE Enrollment



Fall Semester Enrollment by Gender

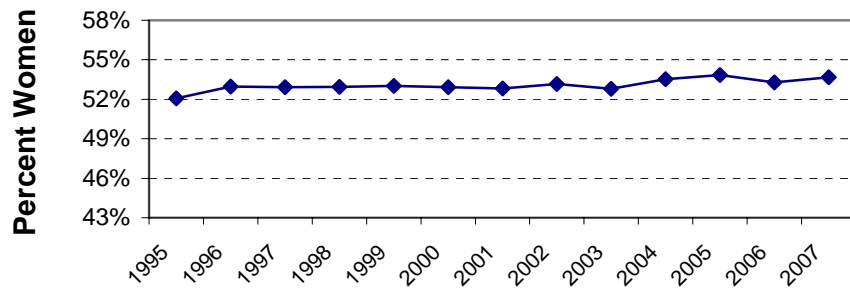
	1997	1998	1999	2000	2001	2002	2003	2004	2005	2006	2007
Undergraduates¹											
Men	5,096	5,043	5,027	5,141	5,232	5,346	5,462	5,425	5,414	5,637	5,558
Women	5,727	5,673	5,671	5,781	5,855	6,069	6,110	6,246	6,313	6,432	6,439
<i>Percent Women</i>	52.9%	52.9%	53.0%	52.9%	52.8%	53.2%	52.8%	53.5%	53.8%	53.3%	53.7%
All Graduate Students											
Men	665	729	740	741	779	792	833	827	831	825	793
Women	636	712	770	750	802	851	947	1,060	1,044	1,067	1,068
<i>Percent Women</i>	48.9%	49.4%	51.0%	50.3%	50.7%	51.8%	53.2%	56.2%	55.7%	56.4%	57.4%
Masters Candidates											
Men	419	458	481	481	506	507	532	493	503	495	467
Women	438	503	555	522	560	594	671	678	646	661	655
<i>Percent Women</i>	51.1%	52.3%	53.6%	52.0%	52.5%	54.0%	55.8%	57.9%	56.2%	57.2%	58.4%
Doctoral Candidates											
Men	246	271	259	260	273	285	301	334	328	330	326
Women	198	209	215	228	242	257	276	382	398	406	413
<i>Percent Women</i>	44.6%	43.5%	45.4%	46.7%	47.0%	47.4%	47.8%	53.4%	54.8%	55.2%	55.9%
Total											
Men	5,761	5,772	5,767	5,882	6,011	6,138	6,295	6,252	6,245	6,462	6,351
Women	6,363	6,385	6,441	6,531	6,657	6,920	7,057	7,306	7,357	7,499	7,507
<i>Percent Women</i>	52.5%	52.5%	52.8%	52.6%	52.5%	53.0%	52.9%	53.9%	54.1%	53.7%	54.2%

Source: Regent's Report A - Part A

¹ Includes nondegree graduate students

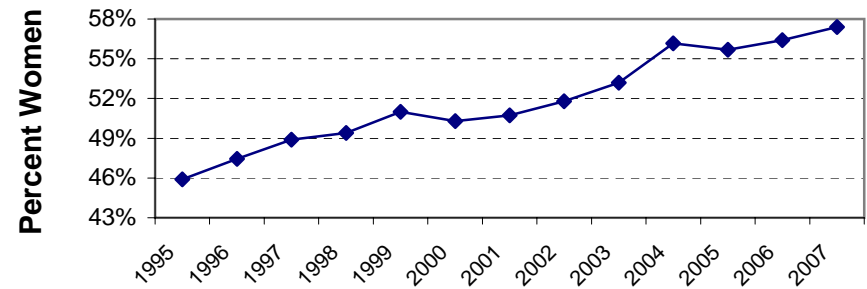
Women as a Percentage of Enrollment by Student Level

Undergraduate¹



Fall Semester

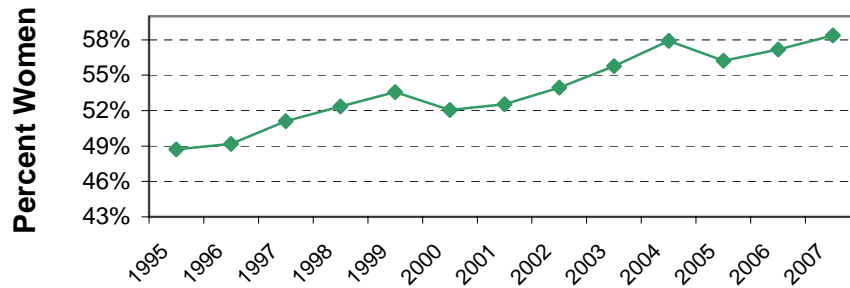
All Graduate Students



Fall Semester

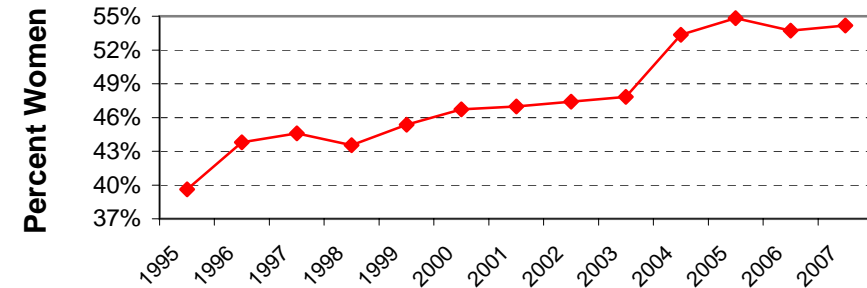
¹ Includes nondegree graduate students

Masters Candidates



Fall Semester

Doctoral Candidates



Fall Semester

Source: Regent's Report A - Part A

Fall Semester Enrollment by Ethnic Category

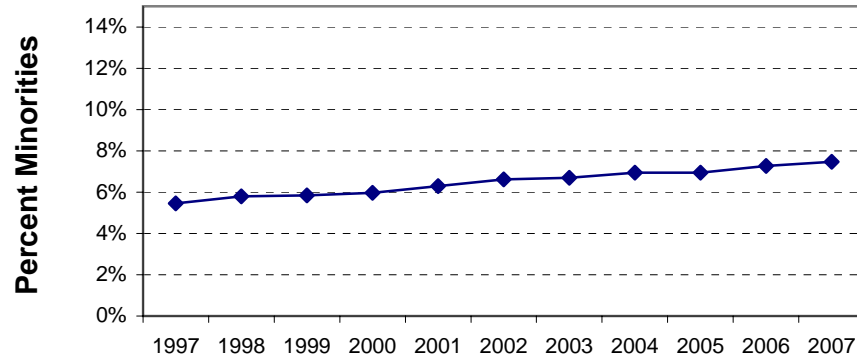
	1997	1998	1999	2000	2001	2002	2003	2004	2005	2006	2007
Undergraduates	10,608	10,520	10,457	10,673	10,848	11,187	11,343	11,431	11,504	11,841	11,799
Caucasian	9,020	9,002	9,073	9,390	9,535	9,800	9,657	9,567	9,623	9,785	9,689
<i>All Ethnic Minorities</i>	<i>579</i>	<i>610</i>	<i>611</i>	<i>636</i>	<i>683</i>	<i>740</i>	<i>760</i>	<i>794</i>	<i>799</i>	<i>861</i>	<i>882</i>
African American	43	54	42	49	51	49	54	64	60	67	61
Asian	103	97	93	120	109	127	129	128	142	156	171
Hispanic	123	141	144	141	155	160	169	171	179	202	221
Native American	310	318	332	326	368	404	408	431	418	436	429
Nonresident Alien	277	290	280	242	237	212	195	215	224	333	339
Other				32	39	63	93	89	106	127	142
Not Reported	732	618	493	373	354	372	638	766	752	735	747
All Graduate Students¹	1,516	1,637	1,751	1,740	1,820	1,871	2,009	2,127	2,098	2,120	2,059
Caucasian	1,248	1,366	1,462	1,437	1,525	1,587	1,717	1,799	1,749	1,744	1,675
<i>All Ethnic Minorities</i>	<i>64</i>	<i>79</i>	<i>89</i>	<i>87</i>	<i>90</i>	<i>96</i>	<i>91</i>	<i>103</i>	<i>126</i>	<i>145</i>	<i>147</i>
African American	4	4	2	2	3	4	7	6	7	9	8
Asian	18	16	18	16	15	17	12	17	20	22	19
Hispanic	11	17	17	19	25	24	17	19	18	22	26
Native American	31	42	52	50	47	51	55	61	81	92	94
Nonresident Alien	81	92	94	98	114	105	111	130	125	125	121
Other				7	12	16	20	19	20	18	21
Not Reported	123	100	106	111	79	67	70	76	78	88	95
Total UM-Missoula	12,124	12,157	12,208	12,413	12,668	13,058	13,352	13,558	13,602	13,961	13,858
Caucasian	10,268	10,368	10,535	10,827	11,060	11,387	11,374	11,366	11,372	11,529	11,364
<i>All Ethnic Minorities</i>	<i>643</i>	<i>689</i>	<i>700</i>	<i>723</i>	<i>773</i>	<i>836</i>	<i>851</i>	<i>897</i>	<i>925</i>	<i>1,006</i>	<i>1,029</i>
African American	47	58	44	51	54	53	61	70	67	76	69
Asian	121	113	111	136	124	144	141	145	162	178	190
Hispanic	134	158	161	160	180	184	186	190	197	224	247
Native American	341	360	384	376	415	455	463	492	499	528	523
Nonresident Alien	358	382	374	340	351	317	306	345	349	458	460
Other	0	0	0	39	51	79	113	108	126	145	163
Not Reported	855	718	599	484	433	439	708	842	830	823	842

Source: Registrar's Reports, Student Data Warehouse

¹ Includes nondegree graduate students

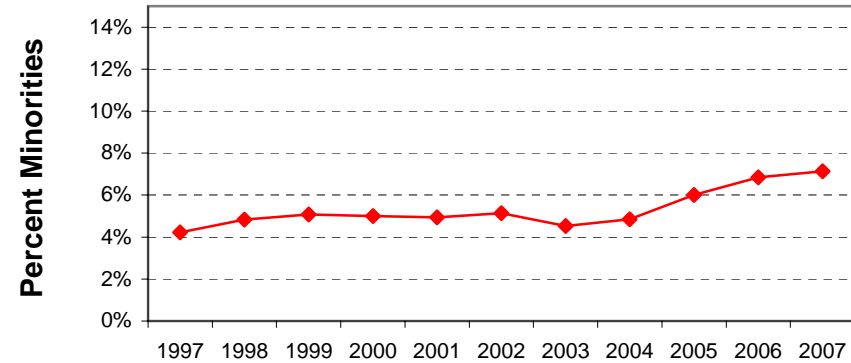
Ethnic Minorities as a Percentage of Enrollment by Student Level

Undergraduate Students



Fall Semester

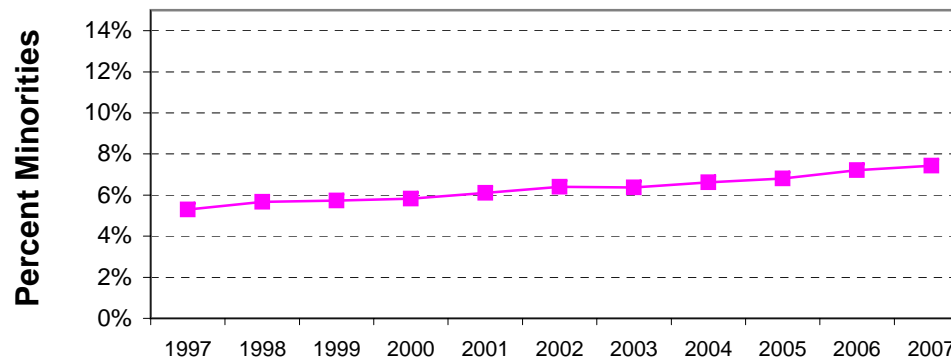
Graduate Students¹



Fall Semester

¹ Includes nondegree graduate students

All Students



Fall Semester

Source: Registrar's Reports, Student Data Warehouse

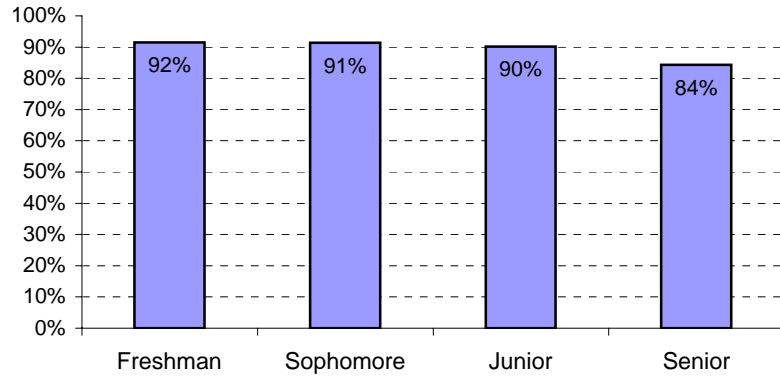
Fall Semester Enrollment by Full Time and Part Time Students

	1997	1998	1999	2000	2001	2002	2003	2004	2005	2006	2007
College of Technology	831	806	818	828	844	933	964	1,069	1,276	1,484	1,532
Full Time					705	763	785	768	916	942	1,041
Part Time					139	170	179	301	360	542	491
Undergraduates	10,823	10,716	10,698	10,922	10,243	10,482	10,608	10,602	10,451	10,585	10,465
Full Time	9,149	9,145	9,079	9,250	8,772	8,744	8,783	8,888	8,736	8,654	8,922
Part Time	1,674	1,571	1,619	1,672	1,471	1,738	1,825	1,714	1,715	1,931	1,543
Freshman	3,414	3,388	3,354	3,502	3,117	3,132	3,123	3,119	2,992	2,856	2,781
Full Time	3,037	3,027	3,024	3,132	2,857	2,788	2,752	2,788	2,694	2,537	2,545
Part Time	377	361	330	370	260	344	371	331	298	319	236
Sophomore	2,160	2,230	2,290	2,237	2,021	2,195	2,135	2,176	2,196	2,243	2,104
Full Time	1,930	2,012	2,037	1,977	1,808	1,909	1,865	1,906	1,910	1,984	1,923
Part Time	230	218	253	260	213	286	270	270	286	259	181
Junior	1,985	1,971	1,972	2,093	1,993	2,015	2,107	2,117	2,100	2,090	2,166
Full Time	1,779	1,767	1,757	1,854	1,760	1,793	1,836	1,848	1,801	1,785	1,953
Part Time	206	204	215	239	233	222	271	269	299	305	213
Senior	2,417	2,356	2,298	2,303	2,362	2,375	2,457	2,409	2,398	2,527	2,628
Full Time	2,083	2,026	1,967	1,978	2,020	1,946	2,046	2,038	2,025	2,081	2,216
Part Time	334	330	331	325	342	429	411	371	373	446	412
Postbacc/Unclass/Other ¹	847	771	784	787	750	765	786	781	765	869	786
Full Time	320	313	294	309	327	308	284	308	306	267	285
Part Time	527	458	490	478	423	457	502	473	459	602	501
All Graduate Students	1,301	1,441	1,510	1,491	1,581	1,643	1,780	1,887	1,875	1,892	1,861
Full Time	913	987	979	1,001	1,063	1,101	1,199	1,233	1,242	1,205	1,223
Part Time	388	454	531	490	518	542	581	654	633	687	638
Masters Candidates	857	961	1,036	1,003	1,066	1,101	1,203	1,171	1,149	1,156	1,122
Full Time	559	604	614	619	677	694	770	687	678	637	650
Part Time	298	357	422	384	389	407	433	484	471	519	472
Doctoral Candidates	444	480	474	488	515	542	577	716	726	736	739
Full Time	354	383	365	382	386	407	429	546	564	568	573
Part Time	90	97	109	106	129	135	148	170	162	168	166
Total UM-Missoula	12,124	12,157	12,208	12,413	12,668	13,058	13,352	13,558	13,602	13,961	13,858
Full Time	10,062	10,132	10,058	10,251	10,540	10,608	10,767	10,889	10,894	10,801	11,186
Part Time	2,062	2,025	2,150	2,162	2,128	2,450	2,585	2,669	2,708	3,160	2,672

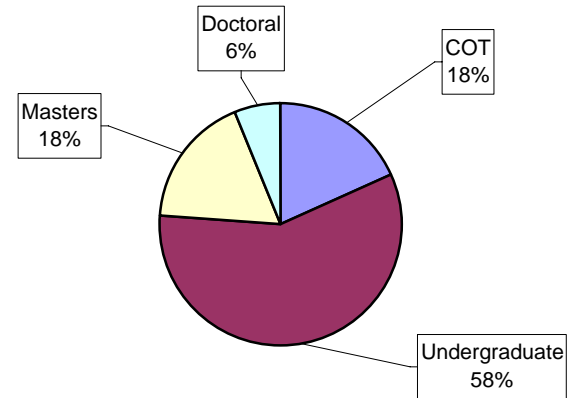
Source: Regent's Report A-1

¹ Includes nondegree graduate students

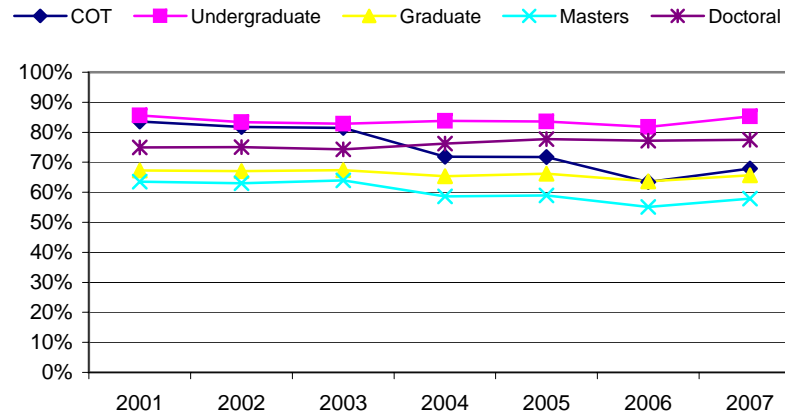
**Percent Full Time Undergraduates by Student Level
Fall 2007**



Who are the 2,672 Part Time Students?



Percent Full Time by Student Level



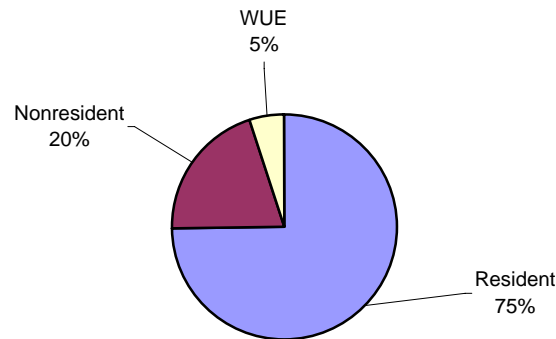
Fall Semester Headcount Enrollments by Residency

	1997	1998	1999	2000	2001	2002	2003	2004	2005	2006	2007
Undergraduates¹	10,608	10,501	10,457	10,666	11,087	11,415	11,572	11,671	11,727	12,069	11,984
Resident	7,463	7,443	7,497	7,740	8,282	8,671	8,934	8,954	8,913	9,126	9,136
Nonresident	2,993	2,807	2,693	2,507	2,437	2,401	2,153	2,204	2,205	2,308	2,141
WUE	152	251	267	419	368	343	485	513	609	635	707
Graduates	1,516	1,656	1,751	1,747	1,581	1,643	1,780	1,887	1,875	1,892	1,874
Resident	997	1,096	1,169	1,139	929	993	1,120	1,209	1,198	1,211	1,214
Nonresident	519	560	582	608	652	650	660	678	677	681	660
All Students	12,124	12,157	12,208	12,413	12,668	13,058	13,352	13,558	13,602	13,961	13,858
Resident	8,460	8,539	8,666	8,879	9,211	9,664	10,054	10,163	10,111	10,337	10,350
Nonresident	3,512	3,367	3,275	3,115	3,089	3,051	2,813	2,882	2,882	2,989	2,801
WUE	152	251	267	419	368	343	485	513	609	635	707

Source: Registrar's Report H

¹ Includes nondegree graduate students

Fall 2007 Enrollment by Residency



Fall Semester Enrollment by Age

	2001	2002	2003	2004	2005	2006	2007
Undergraduates	10,454	10,763	10,859	10,958	11,018	11,368	11,314
17 to 21	6,150	6,332	6,329	6,411	6,450	6,609	6,579
22 to 24	2,401	2,429	2,497	2,480	2,497	2,522	2,504
25 to 34	1,309	1,396	1,462	1,520	1,521	1,611	1,638
35 to 49	511	521	483	466	462	503	466
50 and over	83	85	88	81	88	123	127
Postbaccalaureates¹	633	652	713	713	709	701	683
17 to 21	1	1	1	2	2	2	0
22 to 24	85	102	108	99	117	112	107
25 to 34	309	308	325	337	300	292	306
35 to 49	170	165	181	190	179	189	153
50 and over	68	76	98	85	111	106	117
Graduates	1,581	1,643	1,780	1,887	1,875	1,892	1,861
17 to 21	10	12	7	6	7	11	10
22 to 24	296	322	357	339	345	376	408
25 to 34	870	909	970	1,032	1,037	1,021	1,019
35 to 49	338	318	346	398	381	372	344
50 and over	67	82	100	112	105	112	80
TOTAL	12,668	13,058	13,352	13,558	13,602	13,961	13,858
Average	25.0	24.9	25.1	24.4	25.2	24.5	24.4

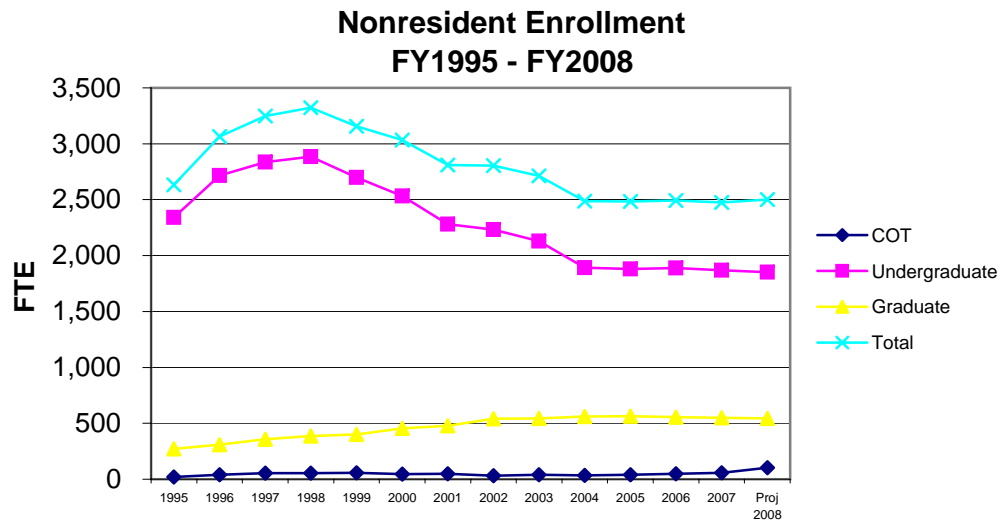
Source: Registrar's Report F

¹ Includes nondegree graduate students

Nonresident Enrollment - Fiscal Year FTE

	1995	1996	1997	1998	1999	2000	2001	2002	2003	2004
Nonresidents (excluding WUE)										
COT	21	40	54	53	56	45	50	32	39	34
Undergraduate	2,340	2,715	2,836	2,885	2,700	2,533	2,282	2,232	2,130	1,892
Graduate	273	310	358	385	401	456	477	542	543	562
Total	2,634	3,065	3,248	3,323	3,157	3,034	2,809	2,806	2,712	2,488

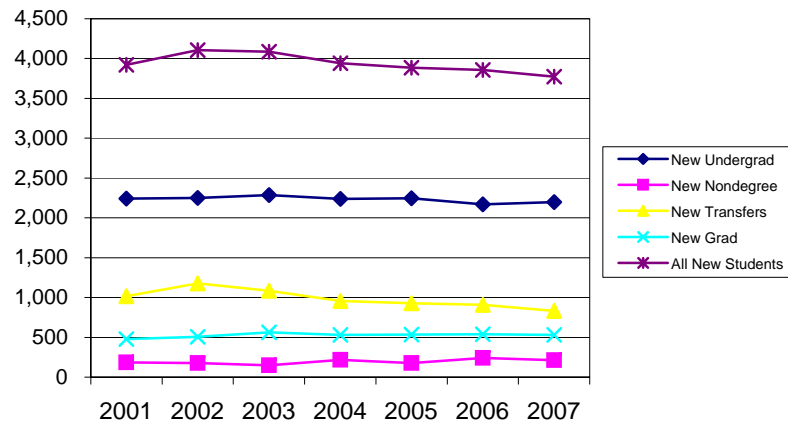
	2005	2006	2007	Projected 2008
Nonresidents (excluding WUE)				
COT	41	48	57	104
Undergraduate	1,879	1,889	1,868	1,853
Graduate	563	555	551	545
Total	2,483	2,492	2,476	2,502



New Students Enrolled by Level - Fall Semesters

	2001	2002	2003	2004	2005	2006	2007
First-Time Freshmen							
Early Admit	19	25	17	13	16	27	14
Traditional	1,959	1,927	1,980	1,941	1,953	1,902	1,910
Nontraditional	265	296	289	283	277	242	275
Total Undergraduates	2,243	2,248	2,286	2,237	2,246	2,171	2,199
First-Time Nondegrees	181	173	145	211	170	153	131
First-Time Transfers	1,017	1,176	1,085	958	928	907	831
Nondegree Graduates	4	5	5	4	6	87	83
First-Time Graduates							
Masters	334	356	408	340	349	342	336
Specialist	4	3	6	3	5	12	8
Doctoral	58	57	64	108	93	95	97
Law	82	90	86	81	88	89	89
Total Graduates	478	506	564	532	535	538	530
Total New Students	3,923	4,108	4,085	3,942	3,885	3,856	3,774

First Time Students by Level

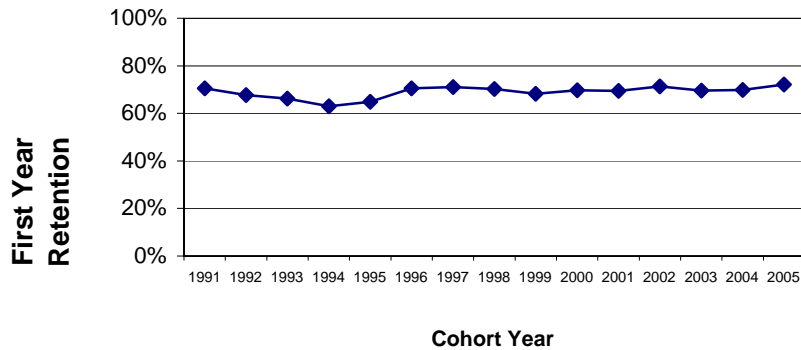


Retention and Graduation Rates of First-Time FT Freshmen

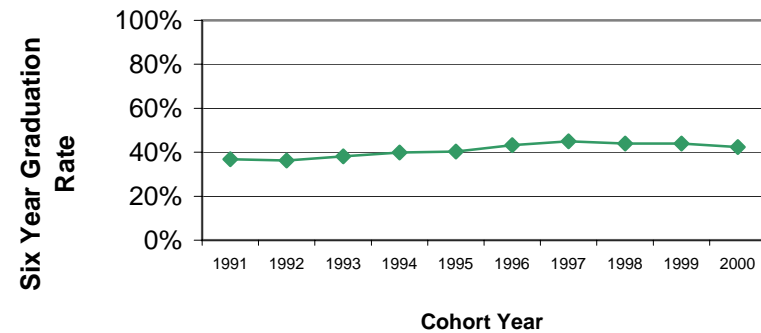
Fall Semester of Entrance	Cohort Head Count	Cumulative Graduation/Continuation Rates									
		Retention Rate after -		Within 4 Years		Within 5 Years		Within 6 Years		Within 10 Years	
		1 Year	2 Years	Graduated	Continuing	Graduated	Continuing	Graduated	Continuing	Graduated	Continuing
1991	1,303	70.5%	55.3%	10.1%	35.5%	30.2%	14.7%	36.8%	8.2%	42.3%	1.8%
1992	1,393	67.7%	52.7%	10.0%	34.1%	29.1%	12.7%	36.3%	6.2%	42.6%	1.5%
1993	1,423	66.2%	52.1%	13.3%	32.1%	32.0%	11.7%	38.1%	6.3%	44.6%	1.2%
1994	1,512	63.0%	53.6%	16.6%	29.9%	34.1%	9.7%	39.9%	4.6%	45.0%	0.9%
1995	1,452	64.8%	51.9%	17.9%	27.7%	33.8%	11.0%	40.3%	5.6%	45.2%	0.7%
1996	1,618	70.5%	55.8%	20.0%	28.7%	37.3%	11.8%	43.3%	5.7%	48.2%	1.4%
1997	1,711	71.1%	57.0%	19.6%	33.0%	38.3%	11.7%	45.0%	5.4%		
1998	1,604	70.2%	57.2%	19.3%	32.4%	37.5%	13.0%	44.0%	6.5%		
1999	1,671	68.3%	54.8%	20.3%	30.8%	36.7%	10.8%	44.0%	4.8%		
2000	1,750	69.7%	57.8%	19.7%	28.9%	36.2%	11.8%	42.3%	5.9%		
2001	1,764	69.4%	57.4%	19.5%	31.3%	36.5%	12.2%				
2002	1,788	71.3%	58.0%	18.5%	31.3%						
2003	1,770	69.5%	57.7%								
2004	1,808	69.8%	56.8%								
2005	1,770	72.1%									
2006	1,658										

Source: CSRDE Survey

Trend in First Year Retention Rate



Trend in Six Year Graduation Rate



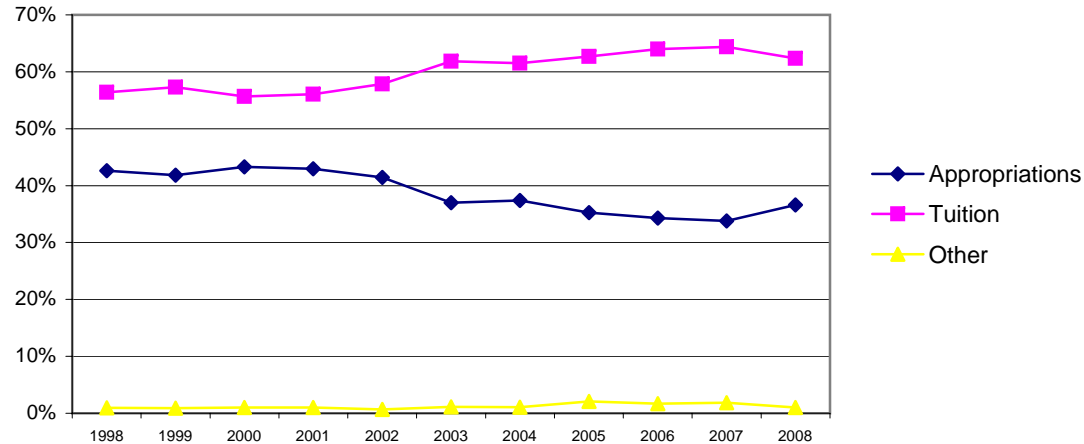
Sources of General Fund Revenues

	1998	1999	2000	2001	2002	2003	2004	2005	2006	2007	Budgeted 2008
General Fund Revenues (\$ millions)											
Appropriations ¹	30.9	31.9	34.7	34.8	36.8	35.5	37.8	37.5	38.6	40.4	47.5
Tuition and Fees	40.9	43.7	44.6	45.4	51.4	59.4	62.2	66.7	72.0	76.9	80.9
Other	0.7	0.7	0.8	0.8	0.6	1.1	1.1	2.2	1.9	2.2	1.3
Total	72.5	76.3	80.1	81.0	88.8	96.0	101.1	106.4	112.5	119.5	129.7
General Fund Revenues (%)											
Appropriations	42.6%	41.8%	43.3%	43.0%	41.4%	37.0%	37.4%	35.2%	34.3%	33.8%	36.6%
Tuition	56.4%	57.3%	55.7%	56.0%	57.9%	61.9%	61.5%	62.7%	64.0%	64.4%	62.4%
Other	1.0%	0.9%	1.0%	1.0%	0.7%	1.1%	1.1%	2.1%	1.7%	1.8%	1.0%
Total	100.0%	100.0%	100.0%	100.0%	100.0%	100.0%	100.0%	100.0%	100.0%	100.0%	100.0%

Source: CHE Operating Reports

¹ Includes any carryforwards/carrybacks

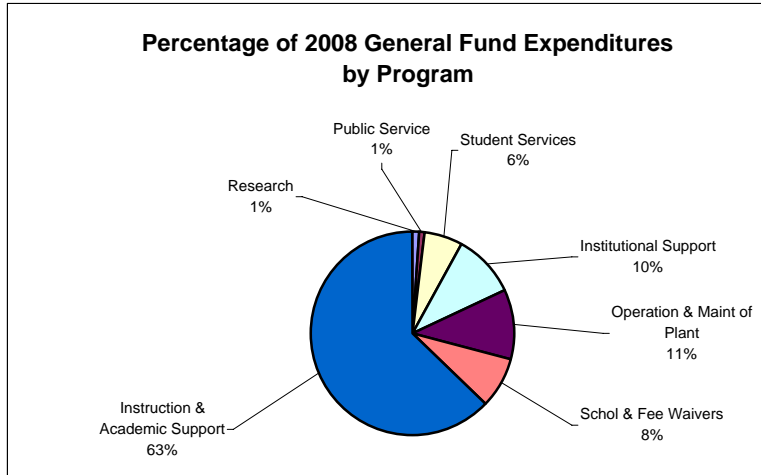
Percentage of General Fund Revenue by Source



General Fund Expenditures by Program

	1998	1999	2000	2001	2002	2003	2004	2005	2006	2007
General Fund Expenditures (\$ millions)										
Instruction	39.4	42.4	44.1	44.5	47.4	52.3	53.2	55.4	55.4	59.9
Research	1.0	1.0	0.9	0.9	0.9	0.9	0.9	0.9	0.9	1.4
Public Service	0.6	0.7	0.8	0.7	0.8	1.0	1.0	0.9	0.9	0.9
Academic Support	9.5	10.1	10.4	10.8	11.8	12.8	13.2	13.5	14.4	15.8
Student Services	5.0	5.2	5.8	5.7	6.8	7.0	6.5	7.0	7.3	7.4
Institutional Support	6.1	5.8	6.6	6.3	6.8	6.9	9.5	10.0	11.7	11.7
Oper & Maint of Plant	7.0	7.6	8.0	8.6	9.7	10.0	10.5	11.9	13.0	13.1
Schol & Fee Waivers	3.3	3.4	3.4	3.3	4.5	5.1	6.2	6.8	8.7	9.1
Total Expenditures	71.9	76.2	80.0	80.8	88.7	96.0	101.0	106.4	112.3	119.3
General Fund Expenditures (%)										
Instruction	54.8%	55.6%	55.1%	55.1%	53.4%	54.5%	52.7%	52.1%	49.3%	50.2%
Research	1.4%	1.3%	1.1%	1.1%	1.0%	0.9%	0.9%	0.8%	0.8%	1.2%
Public Service	0.8%	0.9%	1.0%	0.9%	0.9%	1.0%	1.0%	0.8%	0.8%	0.8%
Academic Support	13.2%	13.3%	13.0%	13.4%	13.3%	13.3%	13.1%	12.7%	12.8%	13.2%
Student Services	7.0%	6.8%	7.3%	7.1%	7.7%	7.3%	6.4%	6.6%	6.5%	6.2%
Institutional Support	8.5%	7.6%	8.3%	7.8%	7.7%	7.2%	9.4%	9.4%	10.4%	9.8%
Operation & Maint of Plant	9.7%	10.0%	10.0%	10.6%	10.9%	10.4%	10.4%	11.2%	11.6%	11.0%
Schol & Fee Waivers	4.6%	4.5%	4.3%	4.1%	5.1%	5.3%	6.1%	6.4%	7.7%	7.6%
Total Expenditures	100.0%	100.0%	100.0%	100.0%	100.0%	100.0%	100.0%	100.0%	100.0%	100.0%

Note: Significant shifts in 2004 reflect the movement of CIS costs to Institutional Support.



General Fund Expenditures by Category

	1998	1999	2000	2001	2002	2003	2004	2005	2006	2007
General Fund Expenditures (\$ millions)										
Salaries	46.1	49.5	51.6	52.0	53.9	58.1	61.8	63.1	66.4	70.8
Benefits	10.5	11.3	12.2	12.0	12.7	14.6	16.2	17.9	19.1	21.6
Transfers	0.4	0.5	0.3	0.7	0.6	2.3	3.3	4.7	2.3	2.3
Operating Costs	9.2	8.9	9.9	10.3	14.1	14.6	12.0	12.1	14.3	13.8
Equipment & Capital	2.4	2.6	2.6	2.5	2.9	1.3	1.5	1.8	1.5	1.7
Schol & Fee Waivers	3.3	3.4	3.4	3.3	4.5	5.1	6.2	6.8	8.7	9.1
Total Expenditures	71.9	76.2	80.0	80.8	88.7	96.0	101.0	106.4	112.3	119.3
General Fund Expenditures (%)										
Salaries	64.1%	65.0%	64.5%	64.4%	60.8%	60.5%	61.2%	59.3%	59.1%	59.3%
Benefits	14.6%	14.8%	15.3%	14.9%	14.3%	15.2%	16.0%	16.8%	17.0%	18.1%
Transfers	0.6%	0.7%	0.4%	0.9%	0.7%	2.4%	3.3%	4.4%	2.0%	1.9%
Operating Costs	12.8%	11.7%	12.4%	12.7%	15.9%	15.2%	11.9%	11.4%	12.7%	11.6%
Equipment & Capital	3.3%	3.4%	3.3%	3.1%	3.3%	1.4%	1.5%	1.7%	1.3%	1.4%
Schol & Fee Waivers	4.6%	4.5%	4.3%	4.1%	5.1%	5.3%	6.1%	6.4%	7.7%	7.6%
Total Expenditures	100.0%	100.0%	100.0%	100.0%	100.0%	100.0%	100.0%	100.0%	100.0%	100.0%

